

UBE2W Rabbit pAb

货号: **AYP17801**

产品信息

反应	Human,Mouse
宿主	Rabbit
克隆性	Polyclonal
预测反应	
应用	WB
推荐浓度	WB: 1:500 - 1:1000
理论分子量	17kDa/18kDa/20kDa
实测分子量	17kDa
形式	Liquid
保存条件	Store at -20°C. Avoid freeze / thaw cycles. Buffer: PBS with 0.01% thiomersal,50% glycerol,pH7.3.
偶联物	Unconjugated
阳性对照	MCF7,LO2,BxPC-3,mouse testis
细胞定位	Nucleus
纯化	Affinity purification

抗原信息

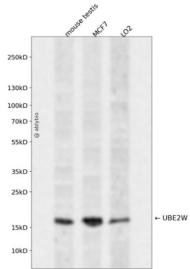
抗原信息	Recombinant fusion protein containing a sequence corresponding to amino acids 40-110 of human UBE2W (NP_001001481.2).
序列	VEVWFPKRLQKELLALQNDPPPGMTLNEKSVQNSITQWIVDMEGAPGTLYEGEKFQLLFKSSRYPFDSPQ

靶点信息

研究背景	This gene encodes a nuclear-localized ubiquitin-conjugating enzyme (E2) that, along with ubiquitin-activating (E1) and ligating (E3) enzymes, coordinates the addition of a ubiquitin moiety to existing proteins. The encoded protein promotes the ubiquitination of Fanconi anemia complementation group proteins and may be important in the repair of DNA damage. There is a pseudogene for this gene on chromosome 1. Alternative splicing results in multiple transcript variants.
基因ID	55284

基因名	UBE2W
Swiss	Q96B02
别名	UBE2W;UBC-16;UBC16

产品验证



Western blot analysis of UBE2W expressed in mouse testis, MCF7, LO2 using UBE2W Rabbit pAb at 1:1000. Secondary antibody: HRP Goat Anti-Rabbit IgG (H+L) at 1:5000. Lysates/proteins: 30ug per lane. Blocking buffer: 5% non-fat dry milk in TBST. Detection: ECL Enhanced Kit. Exposure time: 120s.

实验步骤

访问官网浏览详情: www.ablybio.cn