

# SCN5A Rabbit pAb

货号: **AYP17791**

## 产品信息

反应	Mouse
宿主	Rabbit
克隆性	Polyclonal
预测反应	
应用	WB
推荐浓度	<b>WB:</b> 1:500 - 1:1000
理论分子量	221kDa/223kDa/224kDa/226kDa
实测分子量	230-280KDa
形式	Liquid
保存条件	Store at -20°C. Avoid freeze / thaw cycles. Buffer: PBS with 0.01% thiomersal,50% glycerol,pH7.3.
偶联物	Unconjugated
阳性对照	Mouse lung
细胞定位	endoplasmic reticulum,lateral plasma membrane,nucleolus,nucleoplasm,perinuclear region of cytoplasm, plasma membrane,sarcolemma,T-tubule,Z disc
纯化	Affinity purification

## 抗原信息

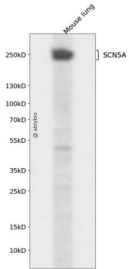
抗原信息	A synthetic peptide corresponding to a sequence within amino acids 1950-2044 of human SCN5A (NP_932173.1).
序列	YVMSENF SRPLGPPSSSSISSTSFPPSYDSVTRATSDNLQVRGSDYSHSEDLADFPSPDRDRESIV

## 靶点信息

研究背景	The protein encoded by this gene is an integral membrane protein and tetrodotoxin-resistant voltage-gated sodium channel subunit. This protein is found primarily in cardiac muscle and is responsible for the initial upstroke of the action potential in an electrocardiogram. Defects in this gene are a cause of long QT syndrome type 3 (LQT3), an autosomal dominant cardiac disease. Alternative splicing results in several transcript variants encoding different isoforms.
基因ID	6331

基因名	SCN5A
Swiss	Q14524
别名	SCN5A;CDCD2;CMD1E;CMPD2;HB1;HB2;HBBD;HH1;ICCD;IVF;LQT3;Nav1.5;PFHB1;SSS1;VF1

## 产品验证



Western blot analysis of SCN5A expressed in Mouse lung using SCN5A Rabbit pAb at 1:1000. Secondary antibody: HRP Goat Anti-Rabbit IgG (H+L) at 1:5000. Lysates/proteins: 30ug per lane. Blocking buffer: 5% non-fat dry milk in TBST. Detection: ECL Enhanced Kit. Exposure time: 120s.

## 实验步骤

访问官网浏览详情: [www.ablybio.cn](http://www.ablybio.cn)