

# METTL1 Rabbit pAb

货号: **AYP17783**

## 产品信息

反应	Human
宿主	Rabbit
克隆性	Polyclonal
预测反应	
应用	WB
推荐浓度	<b>WB:</b> 1:500 - 1:2000
理论分子量	17kDa/31kDa
实测分子量	37kDa
形式	Liquid
保存条件	Store at -20°C. Avoid freeze / thaw cycles. Buffer: PBS with 0.01% thiomersal, 50% glycerol, pH7.3.
偶联物	Unconjugated
阳性对照	U-87MG, 293T, LO2, HT-29
细胞定位	Nucleus
纯化	Affinity purification

## 抗原信息

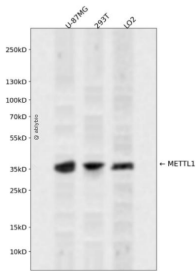
抗原信息	Recombinant fusion protein containing a sequence corresponding to amino acids 1-276 of human METTL1 (NP_005362.3).
序列	MAAETRNVAGAEAPPPQKRYRQRAHSNPMADHTLRYPVKPEEMDWSELYPEFFAPLTQNSHDDPKDKKEKRAQAQV EFADIGCGYGGLLVLSPLFPDTLILGLEIRVKVSDYVQDRIRALRAAPAGGFQNIACLRSNAMKHLPNFFYKQQLTKMFFLF PDPHFKRTKHKWRIISPTLLAEYAYVLRVGGGLVYTITDVLELHDWMCTHFEEHPLFERVPLEDLSEDPVVGHLGTSTEEGKK VLRNGGKNFPAIFRRIQDPVLQAVTSQTSPLPGH

## 靶点信息

研究背景	This gene is similar in sequence to the <i>S. cerevisiae</i> YDL201w gene. The gene product contains a conserved S-adenosylmethionine-binding motif and is inactivated by phosphorylation. Alternative splice variants encoding different protein isoforms have been described for this gene. A pseudogene has been identified on chromosome X.
------	---

基因ID	4234
基因名	METTL1
Swiss	Q9UBP6
别名	METTL1;C12orf1;TRM8;TRMT8;YDL201w

## 产品验证



Western blot analysis of METTL1 expressed in U-87MG,293T,LO2 using METTL1 Rabbit pAb at 1:1000. Secondary antibody: HRP Goat Anti-Rabbit IgG (H+L) at 1:5000. Lysates/proteins: 30ug per lane. Blocking buffer: 5% non-fat dry milk in TBST. Detection: ECL Enhanced Kit. Exposure time: 120s.

## 实验步骤

访问官网浏览详情: [www.ablybio.cn](http://www.ablybio.cn)