

PCM1 Rabbit pAb

货号: **AYP17777**

产品信息

| | |
|-------|--|
| 反应 | Human |
| 宿主 | Rabbit |
| 克隆性 | Polyclonal |
| 预测反应 | |
| 应用 | WB IF/ICC |
| 推荐浓度 | WB: 1:500 - 1:1000 IF/ICC: 1:50 - 1:200 |
| 理论分子量 | 59kDa/222kDa/228kDa |
| 实测分子量 | 270KDa |
| 形式 | Liquid |
| 保存条件 | Store at -20°C. Avoid freeze / thaw cycles. Buffer: PBS with 0.01% thiomersal,50% glycerol,pH7.3. |
| 偶联物 | Unconjugated |
| 阳性对照 | Jurkat |
| 细胞定位 | Cytoplasm,Cytoplasmic granule,centriolar satellite,centrosome,cilium basal body,cytoskeleton,microtubule organizing center |
| 纯化 | Affinity purification |

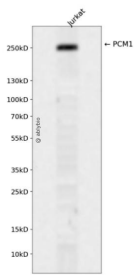
抗原信息

| | |
|------|---|
| 抗原信息 | Recombinant fusion protein containing a sequence corresponding to amino acids 1-260 of human PCM1 (NP_006188.4). |
| 序列 | MATGGGPFEDGMNDQDLPNWSNENVDDRLNNMDWGAQQKKANRSSEKNKKKFGVESDKRVTNDISPESPPGVGRR RTKTPHTFPHSRYMSQMSVPEQAELEKLRINFSDDLQRSIGSDSQGRATAANNKRQALSENRKPFNFLPMQINTNKS ASTNPPNRETIGSAQCKELFASALSNDLLQNCQVSEEDGRGEPAMESSQIVSRLVQIRDYITKASSMREDLVEKNERSANV ERLTHLIDHLKEQEKSVMKFLKKI |

靶点信息

| | |
|-------|---|
| 研究背景 | The protein encoded by this gene is a component of centriolar satellites, which are electron dense granules scattered around centrosomes. Inhibition studies show that this protein is essential for the correct localization of several centrosomal proteins, and for anchoring microtubules to the centrosome. Chromosomal aberrations involving this gene are associated with papillary thyroid carcinomas and a variety of hematological malignancies, including atypical chronic myeloid leukemia and T-cell lymphoma. Multiple transcript variants encoding different isoforms have been found for this gene. |
| 基因ID | 5108 |
| 基因名 | PCM1 |
| Swiss | Q15154 |
| 别名 | PCM1;PTC4;RET/PCM-1 |

产品验证



Western blot analysis of PCM1 expressed in Jurkat using PCM1 Rabbit pAb at 1:1000. Secondary antibody: HRP Goat Anti-Rabbit IgG (H+L) at 1:5000. Lysates/proteins: 30ug per lane. Blocking buffer: 5% non-fat dry milk in TBST. Detection: ECL Enhanced Kit. Exposure time: 120s.

实验步骤

访问官网浏览详情: www.ablybio.cn