

Epn2 Rabbit pAb

货号: **AYP17765**

产品信息

反应	Human,Mouse,Rat
宿主	Rabbit
克隆性	Polyclonal
预测反应	
应用	WB
推荐浓度	WB: 1:500 - 1:1000
理论分子量	36kDa/57kDa/62kDa/68kDa
实测分子量	68KDa
形式	Liquid
保存条件	Store at -20°C. Avoid freeze / thaw cycles. Buffer: PBS with 0.01% thiomersal,50% glycerol,pH7.3.
偶联物	Unconjugated
阳性对照	HepG2
细胞定位	cytosol,endosome,plasma membrane
纯化	Affinity purification

抗原信息

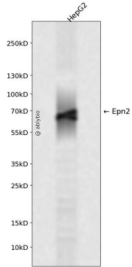
抗原信息	A synthetic peptide corresponding to a sequence within amino acids 100-200 of mouse Epn2 (XP_006532 226.1).
序列	IFAIQTLKDFQYIDRDGKDQGINVREKSKQLVALLKDEERLKVERVQALKTKERMAQVATGVGSNQITFGRGSSQPNLSTS YSEQEYGGKAGGSPASYHGSP

靶点信息

研究背景	Plays a role in the formation of clathrin-coated invaginations and endocytosis.
基因ID	13855
基因名	

Swiss	O95208
别名	9530051D10Rik;AA536924;lbp2;Epn2

产品验证



Western blot analysis of Epn2 expressed in HepG2 using Epn2 Rabbit pAb at 1:1000. Secondary antibody: HRP Goat Anti-Rabbit IgG (H+L) at 1:5000. Lysates/proteins: 30ug per lane. Blocking buffer: 5% non-fat dry milk in TBST. Detection: ECL Enhanced Kit. Exposure time: 120s.

实验步骤

访问官网浏览详情: www.ablybio.cn