

# Cpsf4l Rabbit pAb

货号: AYP17764

## 产品信息

反应	Mouse
宿主	Rabbit
克隆性	Polyclonal
预测反应	
应用	WB
推荐浓度	<b>WB:</b> 1:500 - 1:2000
理论分子量	20kDa
实测分子量	22kDa
形式	Liquid
保存条件	Store at -20°C. Avoid freeze / thaw cycles. Buffer: PBS with 0.01% thiomersal, 50% glycerol, pH7.3.
偶联物	Unconjugated
阳性对照	Mouse testis, Mouse brain
细胞定位	
纯化	Affinity purification

## 抗原信息

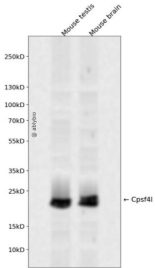
抗原信息	Recombinant fusion protein containing a sequence corresponding to amino acids 1-228 of mouse Cpsf4l (NP_080958.2).
序列	MEEVIAGLQGFTFAFELDVESQKGTGLLPFQGMKSSSAVCNFFAKGLCVKGMLCPLRHEQGEKLVVCKHWRGLCRKSDCCDFLHQYDVKMPVCYFHSKFGNCSNKECLFLHLKPVLLKQDCPWYNQGFCKEVGPLCKYRHVHQVLCPNYFTGFCPEGPQCQFGHPKMSPPFHPSNVKLQPVNQPWDSTTSTGNTLVSPFQAKPMVHGQRRWVSLPQACSSRAHPAP

## 靶点信息

研究背景	Predicted to be involved in pre-mRNA cleavage required for polyadenylation. Predicted to be part of mRNA cleavage and polyadenylation specificity factor complex. Is expressed in central nervous system and retina. Orthologous to human CPSF4L (cleavage and polyadenylation specific factor 4 like).
基因ID	52670

基因名	
Swiss	A6NMK7
别名	CPSF4L;0610010C04Rik;1500000C01Rik;D11Ert636e;Cpsf4l

## 产品验证



Western blot analysis of Cpsf4l expressed in Mouse testis, Mouse brain using Cpsf4l Rabbit pAb at 1:1000. Secondary antibody: HRP Goat Anti-Rabbit IgG (H+L) at 1:5000. Lysates/proteins: 30ug per lane. Blocking buffer: 5% non-fat dry milk in TBST. Detection: ECL Enhanced Kit. Exposure time: 120s.

## 实验步骤

访问官网浏览详情: [www.ablybio.cn](http://www.ablybio.cn)