

# SOGA1 Rabbit pAb

货号: AYP17760

## 产品信息

反应	Human,Mouse,Rat
宿主	Rabbit
克隆性	Polyclonal
预测反应	
应用	WB
推荐浓度	<b>WB:</b> 1:500 - 1:2000
理论分子量	55kDa/115kDa/159kDa/183kDa
实测分子量	80kDa
形式	Liquid
保存条件	Store at -20°C. Avoid freeze / thaw cycles. Buffer: PBS with 0.01% thiomersal,50% glycerol,pH7.3.
偶联物	Unconjugated
阳性对照	Mouse liver,Mouse brain,Mouse lung,Rat liver,Rat brain
细胞定位	Secreted
纯化	Affinity purification

## 抗原信息

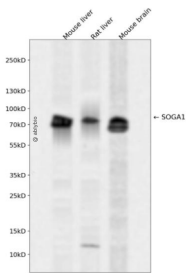
抗原信息	Recombinant fusion protein containing a sequence corresponding to amino acids 650-750 of human SOG A1 (NP_542194.2).
序列	AEVLPGLREQAALVSKAIDVLVADANGFTAGLRCLDNECADFRLHEAPDNSEGPRDTKLIHAILVRLSVLQQLNAFTRKADAVLGCSVKEQQESFSSLP

## 靶点信息

研究背景	Regulates autophagy by playing a role in the reduction of glucose production in an adiponectin- and insulin-dependent manner.
基因ID	140710
基因名	SOGA1

<b>Swiss</b>	O94964
别名	SOGA1;C20orf117;KIAA0889;SOGA

## 产品验证



Western blot analysis of SOGA1 expressed in Mouse liver,Rat liver,Mouse brain using SOGA1 Rabbit pAb at 1:1000. Secondary antibody: HRP Goat Anti-Rabbit IgG (H+L) at 1:5000. Lysates/proteins: 30ug per lane. Blocking buffer: 5% non-fat dry milk in TBST. Detection: ECL Enhanced Kit. Exposure time: 120s.

## 实验步骤

访问官网浏览详情: [www.ablybio.cn](http://www.ablybio.cn)