

# RBMY1F Rabbit pAb

货号: **AYP17753**

## 产品信息

反应	Rat
宿主	Rabbit
克隆性	Polyclonal
预测反应	
应用	WB
推荐浓度	<b>WB:</b> 1:500 - 1:2000
理论分子量	47kDa/55kDa
实测分子量	56kDa
形式	Liquid
保存条件	Store at -20°C. Avoid freeze / thaw cycles. Buffer: PBS with 0.01% thiomersal, 50% glycerol, pH7.3.
偶联物	Unconjugated
阳性对照	Rat kidney
细胞定位	Nucleus
纯化	Affinity purification

## 抗原信息

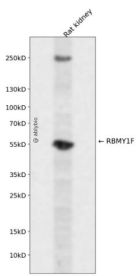
抗原信息	Recombinant fusion protein containing a sequence corresponding to amino acids 1-80 of human RBMY1F (NP_689798.1).
序列	MVEADHPGKLFIGGLNRETNEKMLKAVFGKHGPISEVLLIKDRTSKSRGFAFITFENPADAKNAAKDMNGTSLHGKAIKV

## 靶点信息

研究背景	This gene encodes a protein containing an RNA-binding motif in the N-terminus and four SRGY (serine, arginine, glycine, tyrosine) boxes in the C-terminus. Multiple copies of this gene are found in the AZFb azoo spermia factor region of chromosome Y and the encoded protein is thought to be involved in spermatogenesis. Most copies of this locus are pseudogenes, although six highly similar copies have full-length ORFs and are considered functional. Four functional copies of this gene are found within inverted repeat IR2; two functional copies of this gene are found in palindrome P3, along with two copies of PTPN13-like, Y-linked .
------	---

基因ID	159163
基因名	
Swiss	Q15415
别名	RBMY1F;YRRM2;RNA binding motif protein;Y-linked;family 1;member F

## 产品验证



Western blot analysis of RBMY1F expressed in Rat kidney using RBMY1F Rabbit pAb at 1:1000. Secondary antibody: HRP Goat Anti-Rabbit IgG (H+L) at 1:5000. Lysates/proteins: 30ug per lane. Blocking buffer: 5% non-fat dry milk in TBST. Detection: ECL Enhanced Kit. Exposure time: 120s.

## 实验步骤

访问官网浏览详情: [www.ablybio.cn](http://www.ablybio.cn)