

SPC24 Rabbit pAb

货号: AYP17750

产品信息

反应	Human,Mouse
宿主	Rabbit
克隆性	Polyclonal
预测反应	
应用	WB
推荐浓度	WB: 1:1000 - 1:5000
理论分子量	17kDa/22kDa
实测分子量	26KDa
形式	Liquid
保存条件	Store at -20°C. Avoid freeze / thaw cycles. Buffer: PBS with 0.05% proclin300,50% glycerol,pH7.3.
偶联物	Unconjugated
阳性对照	HeLa
细胞定位	Chromosome,Nucleus,centromere,kinetochore
纯化	Affinity purification

抗原信息

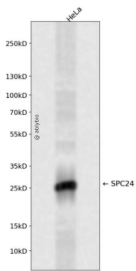
抗原信息	Recombinant fusion protein containing a sequence corresponding to amino acids 1-197 of human SPC24 (NP_872319.1).
序列	MAAFRDIEEVSQGLLSLLGANRAEAQQRLLGRHEQVVERLLETQDGAEKQLREILTMEKEVAQSLLNAKEQVHQGGVEL QQLEAGLQEAGEEDTRLKASLLQLTRELEELKEIEADLERQEKEVDEDDTTVTIPSAVYVAQLYHQVSKIEWDYECEPGMVKG IHHGPSVAQPIHLDSTQLSRKFISDYLWLSLVDTEW

靶点信息

研究背景	Acts as a component of the essential kinetochore-associated NDC80 complex, which is required for chromosome segregation and spindle checkpoint activity. Required for kinetochore integrity and the organization of stable microtubule binding sites in the outer plate of the kinetochore. The NDC80 complex synergistically enhances the affinity of the SKA1 complex for microtubules and may allow the NDC80 complex to track depolymerizing microtubules.
------	--

基因ID	147841
基因名	SPC24
Swiss	Q8NBT2
别名	SPC24;SPBC24

产品验证



Western blot analysis of SPC24 expressed in HeLa using SPC24 Rabbit pAb at 1:1000. Secondary antibody : HRP Goat Anti-Rabbit IgG (H+L) at 1:5000. Lysates/proteins: 30ug per lane. Blocking buffer: 5% non-fat dry milk in TBST. Detection: ECL Enhanced Kit. Exposure time: 120s.

实验步骤

访问官网浏览详情: www.ablybio.cn