

KLHL15 Rabbit pAb

货号: **AYP17732**

产品信息

反应	Human,Mouse,Rat
宿主	Rabbit
克隆性	Polyclonal
预测反应	
应用	WB
推荐浓度	WB: 1:500 - 1:2000
理论分子量	69kDa
实测分子量	70kDa
形式	Liquid
保存条件	Store at -20°C. Avoid freeze / thaw cycles. Buffer: PBS with 0.01% thiomersal,50% glycerol,pH7.3.
偶联物	Unconjugated
阳性对照	293T,U-251MG,Mouse brain,Mouse lung,Rat lung
细胞定位	nucleus
纯化	Affinity purification

抗原信息

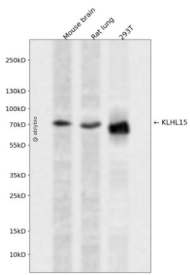
抗原信息	Recombinant fusion protein containing a sequence corresponding to amino acids 1-300 of human KLHL15 (NP_085127.2).
序列	MAGDVEGFCSSIHDTSVSAGFRALYEEGLLDVTLVIEDHQFQAHKALLATQSDYFRIMFTADMRRERDQDKIHLKGLTAT GFSHVLQFMYYGTIELSMNTVHEILQAAMYVQLIEVVKFCCSFLAKICLENCAEIMRLLDDFGVNIIEGVREKLDTFLLDNFV PLMSRPDFLSYLSFEKLSYLDNDHLSRFPEIELYEAVQSWLRHRRRWRHTDTIIQNIIRFCLMTPTSVFEEKVKTSEFYRYS RQLRYEVDQALNYFQNVHQQLLDMKSSRIRSAKPQTTVFRGMIGHSMVNSKILL

靶点信息

研究背景	This gene encodes a member of the kelch-like family of proteins that share a common domain structure consisting of an N-terminal broad-complex, tramtrack, bric-a-brac/poxvirus and zinc finger domain and C-terminal kelch repeat motifs. The encoded protein may be involved in protein ubiquitination and cytoskeletal organization.
------	---

基因ID	80311
基因名	KLHL15
Swiss	Q96M94
别名	KLHL15;HEL-S-305

产品验证



Western blot analysis of KLHL15 expressed in Mouse brain,Rat lung,293T using KLHL15 Rabbit pAb at 1:1000. Secondary antibody: HRP Goat Anti-Rabbit IgG (H+L) at 1:5000. Lysates/proteins: 30ug per lane . Blocking buffer: 5% non-fat dry milk in TBST. Detection: ECL Enhanced Kit. Exposure time: 120s.

实验步骤

访问官网浏览详情: www.ablybio.cn