

SLAMF7 Rabbit pAb

货号: **AYP17724**

产品信息

反应	Human,Mouse,Rat
宿主	Rabbit
克隆性	Polyclonal
预测反应	
应用	WB IHC
推荐浓度	WB: 1:1000 - 1:5000 IHC: 1:50 - 1:200
理论分子量	17kDa/21kDa/22kDa/25kDa/32kDa/37kDa
实测分子量	35-70KDa
形式	Liquid
保存条件	Store at -20°C. Avoid freeze / thaw cycles. Buffer: PBS with 0.01% thiomersal,50% glycerol,pH7.3.
偶联物	Unconjugated
阳性对照	THP-1,Jurkat,Mouse thymus
细胞定位	Membrane,Single-pass type I membrane protein
纯化	Affinity purification

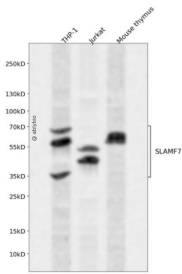
抗原信息

抗原信息	Recombinant fusion protein containing a sequence corresponding to amino acids 23-226 of human SLAMF 7 (NP_067004.3).
序列	SGPVKELVGSVGGAVTFPLKSKVKQVDSIVWTFNTTPLVTIQPEGGTIIVTQNRNRERVDFFPDGGYSLKLSKLLKKNDSGIYY VGIYSSSLQQPSTQEYVLHVYEHLSKPKVTMGLQSNKNGTCVNTLTCCMEHGEEVDIYTWKALGQAANESHNGSILPISW RWGESDMTFICVARNPVSRNFSSPILARKLCEGAADDPDSSM

靶点信息

研究背景	SLAM family member 7 (SLAMF7), also known as CRACC, CD319, CD2-like receptor-activating cytotoxic cells, and CS1, is a single-pass type I membrane protein and a member of the CD2 family of cell surface receptors. SLAMF7 is expressed on the surface of NK cells, CD8+ T cells, activated B cells, and mature dendritic cells but not in promyelocytic, B-cell lines, or T-cell lines. In human NK cells, activated SLAMF7 transmits signals following association with the adaptor protein EAT-2. In the absence of EAT-2, SLAMF7 potentially inhibited natural killer cell function. It was also inhibitory in T cells, which are typically devoid of EAT-2. Thus, SLAMF7 can exert activating or inhibitory influences on cells of the immune system depending on cellular context and the availability of effector proteins.
基因ID	57823
基因名	SLAMF7
Swiss	Q9NQ25
别名	SLAMF7;19A;CD319;CRACC;CS1

产品验证



Western blot analysis of SLAMF7 expressed in THP-1, Jurkat, Mouse thymus using SLAMF7 Rabbit pAb at 1:1000. Secondary antibody: HRP Goat Anti-Rabbit IgG (H+L) at 1:5000. Lysates/proteins: 30ug per lane. Blocking buffer: 5% non-fat dry milk in TBST. Detection: ECL Enhanced Kit. Exposure time: 120s.

实验步骤

访问官网浏览详情: www.ablybio.cn