

— ABLYBIO, Help Your Research



PMEPA1 Rabbit pAb

货号: **AYP17723**

产品信息

反应	Human,Mouse,Rat
宿主	Rabbit
克隆性	Polyclonal
预测反应	
应用	WB IHC IF/ICC
推荐浓度	WB: 1:500 - 1:2000 IHC: 1:50 - 1:200 IF/ICC: 1:50 - 1:200
理论分子量	26kDa/27kDa/31kDa
实测分子量	26kDa/27kDa/31kDa
形式	Liquid
保存条件	Store at -20°C. Avoid freeze / thaw cycles. Buffer: PBS with 0.01% thiomersal,50% glycerol,pH7.3.
偶联物	Unconjugated
阳性对照	L02 cells, U2OS cells
细胞定位	Early endosome membrane,Golgi apparatus membrane,Single-pass membrane protein
纯化	Affinity purification

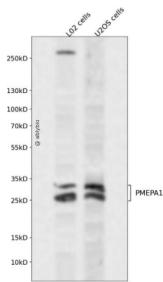
抗原信息

抗原信息	Recombinant fusion protein containing a sequence corresponding to amino acids 173-252 of human PMEP A1 (NP_954638.1).
------	---

靶点信息

研究背景	This gene encodes a transmembrane protein that contains a Smad interacting motif (SIM). Expression of this gene is induced by androgens and transforming growth factor beta, and the encoded protein suppresses the androgen receptor and transforming growth factor beta signaling pathways through interactions with Smad proteins. Overexpression of this gene may play a role in multiple types of cancer. Alternatively spliced transcript variants encoding multiple isoforms have been observed for this gene.
基因ID	56937
基因名	PMEPA1
Swiss	Q969W9 (https://www.uniprot.org/uniprotkb/Q969W9/entry)
别名	PMEPA1,STAG1,TMEPAI,PMEPA1 Rabbit pAb,Prostate transmembrane protein androgen induced 1,Solid tumor-associated 1 protein,Transmembrane prostate androgen-induced protein

产品验证



Western blot analysis of PMEPA1 expressed in L02 cells,U2OS cells using PMEPA1 Rabbit pAb at 1:1000. Secondary antibody: HRP Goat Anti-Rabbit IgG (H+L) at 1:5000. Lysates/proteins: 30ug per lane. Blocking buffer: 5% non-fat dry milk in TBST. Detection: ECL Enhanced Kit. Exposure time: 120s.

实验步骤

访问官网浏览详情: www.ablybio.cn (<https://www.ablybio.cn/www.ablybio.cn>)