

CPXM1 Rabbit pAb

货号: **AYP17721**

产品信息

反应	Human,Mouse
宿主	Rabbit
克隆性	Polyclonal
预测反应	
应用	WB
推荐浓度	WB: 1:500 - 1:2000
理论分子量	81kDa
实测分子量	81kDa
形式	Liquid
保存条件	Store at -20°C. Avoid freeze / thaw cycles. Buffer: PBS with 0.01% thiomersal,50% glycerol,pH7.3.
偶联物	Unconjugated
阳性对照	U-251MG,BxPC-3
细胞定位	Secreted
纯化	Affinity purification

抗原信息

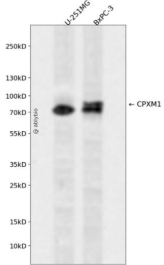
抗原信息	Recombinant fusion protein containing a sequence corresponding to amino acids 435-734 of human CPX M1 (Q96SM3).
序列	HNFADLNTPLWEAQDDGKVPHIVPNHHLPLPTYTLPNATVAPETRAVIKWMKRIPFVLSANLHGGELVVSYPFDMTRTPW AARELTPTPDDAVFRWLSTVYAGSNLAMQDTSRRPCHSQDFSVHGNIINGADWHTVPGSMNDFSYLHTNCFEVTVELSC DKFPHENELPQEWENNKDALLTYLEQVRMGIAGVVRDKDELGIADAVIAVDGINHDVTTAWGGDYWRLLTPGDYMVTA SAEGYHSVTRNCRVTFEEGPFPCNFVLTTPKQRLRELLAAGAKVPPDLRRRLERLRGQKD

靶点信息

研究背景	This gene likely encodes a member of the carboxypeptidase family of proteins. Cloning of a comparable locus in mouse indicates that the encoded protein contains a discoidin domain and a carboxypeptidase domain, but the protein appears to lack residues necessary for carboxypeptidase activity.
基因ID	56265

基因名	CPXM1
Swiss	Q96SM3
别名	CPXM1;CPX1;CPXM

产品验证



Western blot analysis of CPXM1 expressed in U-251MG, BxPC-3 using CPXM1 Rabbit pAb at 1:1000. Secondary antibody: HRP Goat Anti-Rabbit IgG (H+L) at 1:5000. Lysates/proteins: 30ug per lane. Blocking buffer: 5% non-fat dry milk in TBST. Detection: ECL Enhanced Kit. Exposure time: 120s.

实验步骤

访问官网浏览详情: www.ablybio.cn