

KIF21A Rabbit pAb

货号: **AYP17712**

产品信息

反应	Human,Mouse
宿主	Rabbit
克隆性	Polyclonal
预测反应	
应用	WB IF/ICC
推荐浓度	WB: 1:500 - 1:2000 IF/ICC: 1:50 - 1:200
理论分子量	180kDa/182kDa/185kDa/187kDa
实测分子量	187kDa
形式	Liquid
保存条件	Store at -20°C. Avoid freeze / thaw cycles. Buffer: PBS with 0.01% thiomersal,50% glycerol,pH7.3.
偶联物	Unconjugated
阳性对照	U-87MG,LO2,HeLa
细胞定位	Cytoplasm,cytoskeleton
纯化	Affinity purification

抗原信息

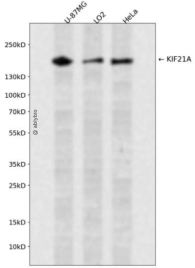
抗原信息	Recombinant fusion protein containing a sequence corresponding to amino acids 1070-1270 of human KIF21A (NP_001166935.1).
序列	KQTEITSATQNQLLFHMLKEKAELNPELDALLGHALQDLDSVPLENVEDSTDEDAPLNSPGSEGSTLSSDLMKLCGEVKPK NKARRRRTTTQMELLYADSSSELASDTSTGDASLPGPLTPVAEGQEIGMNTETSGTSAREKELSPPPGLPSKIGSISRQSSLSE KKIPEPSPVTRRKAYEKAESKAKEQKHSDSGTSEASL

靶点信息

研究背景	This gene encodes a member of the KIF4 subfamily of kinesin-like motor proteins. The encoded protein is characterized by an N-terminal motor domain a coiled-coil stalk domain and a C-terminal WD-40 repeat domain. This protein may be involved in microtubule dependent transport. Mutations in this gene are the cause of congenital fibrosis of extraocular muscles-1. Alternate splicing results in multiple transcript variants.
------	---

基因ID	55605
基因名	KIF21A
Swiss	Q7Z4S6
别名	KIF21A;CFEOM1;FEOM1;FEOM3A

产品验证



Western blot analysis of KIF21A expressed in U-87MG,LO2,HeLa using KIF21A Rabbit pAb at 1:1000. Secondary antibody: HRP Goat Anti-Rabbit IgG (H+L) at 1:5000. Lysates/proteins: 30ug per lane. Blocking buffer: 5% non-fat dry milk in TBST. Detection: ECL Enhanced Kit. Exposure time: 120s.

实验步骤

访问官网浏览详情: www.ablybio.cn