

LIN7C Rabbit pAb

货号: **AYP17708**

产品信息

反应	Human,Mouse,Rat
宿主	Rabbit
克隆性	Polyclonal
预测反应	
应用	WB
推荐浓度	WB: 1:500 - 1:2000
理论分子量	21kDa
实测分子量	25kDa
形式	Liquid
保存条件	Store at -20°C. Avoid freeze / thaw cycles. Buffer: PBS with 0.01% thiomersal,50% glycerol,pH7.3.
偶联物	Unconjugated
阳性对照	HeLa,HepG2,U-251MG,Mouse kidney,Rat kidney
细胞定位	Basolateral cell membrane,Cell junction,Cell membrane,Peripheral membrane protein,postsynaptic cell membrane,postsynaptic density,synapse,synaptosome,tight junction
纯化	Affinity purification

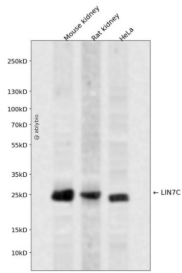
抗原信息

抗原信息	Recombinant fusion protein containing a sequence corresponding to amino acids 1-70 of human LIN7C (NP_060832.1).
序列	MAALGEPVRLERDLCRAIELLEKLQRSGEVPPQKLQALQSVLQSEFCNAVREYEHVYETVDISSSPEVR

靶点信息

研究背景	Plays a role in establishing and maintaining the asymmetric distribution of channels and receptors at the plasma membrane of polarized cells. Forms membrane-associated multiprotein complexes that may regulate delivery and recycling of proteins to the correct membrane domains. The tripartite complex composed of LIN7 (LIN7A, LIN7B or LIN7C, CASK and APBA1 associates with the motor protein KIF17 to transport vesicles containing N-methyl-D-aspartate (NMDA receptor subunit NR2B along microtubules (By similarity. This complex may have the potential to couple synaptic vesicle exocytosis to cell adhesion in brain. Ensures the proper localization of GRIN2B (subunit 2B of the NMDA receptor to neuronal postsynaptic density and may function in localizing synaptic vesicles at synapses where it is recruited by beta-catenin and cadherin. Required to localize Kir2 channels, GABA transporter (SLC6A12 and EGFR/ERBB1, ERBB2, ERBB3 and ERBB4 to the basolateral membrane of epithelial cells.
基因ID	55327
基因名	LIN7C
Swiss	Q9NUP9
别名	LIN7C;LIN-7-C;LIN-7C;MALS-3;MALS3;VELI3

产品验证



Western blot analysis of LIN7C expressed in Mouse kidney,Rat kidney,HeLa using LIN7C Rabbit pAb at 1:1000. Secondary antibody: HRP Goat Anti-Rabbit IgG (H+L) at 1:5000. Lysates/proteins: 30ug per lane. Blocking buffer: 5% non-fat dry milk in TBST. Detection: ECL Enhanced Kit. Exposure time: 120s.

实验步骤

访问官网浏览详情: www.ablybio.cn