

CKLF Rabbit pAb

货号: **AYP17694**

产品信息

反应	Mouse,Rat
宿主	Rabbit
克隆性	Polyclonal
预测反应	
应用	WB
推荐浓度	WB: 1:500 - 1:2000
理论分子量	7kDa/10kDa/12kDa/13kDa/17kDa
实测分子量	13kDa
形式	Liquid
保存条件	Store at -20°C. Avoid freeze / thaw cycles. Buffer: PBS with 0.01% thiomersal,50% glycerol,pH7.3.
偶联物	Unconjugated
阳性对照	Mouse thymus,Mouse testis,Rat thymus,Rat testis
细胞定位	Membrane,Multi-pass membrane protein,Secreted
纯化	Affinity purification

抗原信息

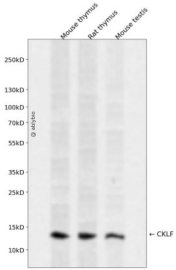
抗原信息	A synthetic peptide corresponding to a sequence within amino acids 1-67 of human CKLF (NP_057410.1).
序列	MDNVQPKIKHRPFCFSVKGHVKMLRLVLFALVTAVCCLADGALIYRKLFFNPSGPYQKKPVHEKKEVL

靶点信息

研究背景	The product of this gene is a cytokine. Cytokines are small proteins that have an essential role in the immune and inflammatory responses. This gene is one of several chemokine-like factor genes located in a cluster on chromosome 16. The protein encoded by this gene is a potent chemoattractant for neutrophils, monocytes and lymphocytes. It also can stimulate the proliferation of skeletal muscle cells. This protein may play important roles in inflammation and in the regeneration of skeletal muscle. Alternatively spliced transcript variants encoding different isoforms have been identified. Naturally occurring read-through transcription occurs between this locus and the neighboring locus CMTM1 (CKLF-like MARVEL transmembrane domain containing 1).
------	---

基因ID	51192
基因名	CKLF
Swiss	Q9UBR5
别名	CKLF;C32;CKLF1;CKLF2;CKLF3;CKLF4;HSPC224;UCK-1

产品验证



Western blot analysis of CKLF expressed in Mouse thymus, Rat thymus, Mouse testis using CKLF Rabbit p Ab at 1:1000. Secondary antibody: HRP Goat Anti-Rabbit IgG (H+L) at 1:5000. Lysates/proteins: 30ug per lane. Blocking buffer: 5% non-fat dry milk in TBST. Detection: ECL Enhanced Kit. Exposure time: 120s.

实验步骤

访问官网浏览详情: www.ablybio.cn