

NGEF Rabbit pAb

货号: **AYP17691**

产品信息

反应	Human,Mouse,Rat
宿主	Rabbit
克隆性	Polyclonal
预测反应	
应用	WB IHC IF/ICC
推荐浓度	WB: 1:500 - 1:2000 IHC: 1:50 - 1:100 IF/ICC: 1:50 - 1:100
理论分子量	26kDa/71kDa/82kDa
实测分子量	82kDa
形式	Liquid
保存条件	Store at -20°C. Avoid freeze / thaw cycles. Buffer: PBS with 0.01% thiomersal,50% glycerol,pH7.3.
偶联物	Unconjugated
阳性对照	PC-3,Rat brain
细胞定位	Cell projection,Cytoplasm,Membrane,growth cone
纯化	Affinity purification

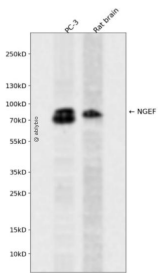
抗原信息

抗原信息	Recombinant fusion protein containing a sequence corresponding to amino acids 429-710 of human NGEF (NP_062824.2).
序列	RVEERSERECTALDAHKELEMVVKACNEGVRKMSRTEQMISIQKMEFKIKSVPIISHSRWLLKQGELQQMSGPKTSRTLRTKKLFEIYLFNFNDLLVICRQIPGDKYQVFD SAPRGLLRVEELEDQGQTLANVFILRLLENADDREATYMLKASSQSEMKRWMTSLAPNRRTKFVSFTSRLLDPCVQVQCVPYVAQQPDELTLLEADILNILDKTDDGWIFGERLHDQERGWFPSSMTEEILNPKIRSQNLKECFRVHKMDDPQRSQNKDRRKLGSRRNQ

靶点信息

研究背景	Acts as a guanine nucleotide exchange factor (GEF which differentially activates the GTPases RHOA, RAC 1 and CDC42. Plays a role in axon guidance regulating ephrin-induced growth cone collapse and dendritic spine morphogenesis. Upon activation by ephrin through EPHA4, the GEF activity switches toward RHOA resulting in its activation. Activated RHOA promotes cone retraction at the expense of RAC1- and CDC42-stimulated growth cone extension (By similarity).
基因ID	25791
基因名	NGEF
Swiss	Q8N5V2
别名	NGEF;ARHGEF27;EPHEXIN;ephexin-1

产品验证



Western blot analysis of NGEF expressed in PC-3, Rat brain using NGEF Rabbit pAb at 1:1000. Secondary antibody: HRP Goat Anti-Rabbit IgG (H+L) at 1:5000. Lysates/proteins: 30ug per lane. Blocking buffer: 5% non-fat dry milk in TBST. Detection: ECL Enhanced Kit. Exposure time: 120s.

实验步骤

访问官网浏览详情: www.ablybio.cn