

# KLK12 Rabbit pAb

货号: **AYP17690**

## 产品信息

反应	Human
宿主	Rabbit
克隆性	Polyclonal
预测反应	
应用	WB
推荐浓度	<b>WB:</b> 1:500 - 1:2000
理论分子量	11kDa/26kDa/27kDa
实测分子量	28kDa
形式	Liquid
保存条件	Store at -20°C. Avoid freeze / thaw cycles. Buffer: PBS with 0.01% thiomersal, 50% glycerol, pH7.3.
偶联物	Unconjugated
阳性对照	HeLa
细胞定位	Secreted
纯化	Affinity purification

## 抗原信息

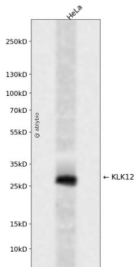
抗原信息	Recombinant fusion protein containing a sequence corresponding to amino acids 18-150 of human KLK12 (NP_062544.1).
序列	ATPKIFNGTECGRNSQPWQVGLFEGTSLRCGGVLIDHRWVLTAAHCSGSRYWVRLGEHLSQLDWTEQIRHSGFSVTHP GYLGASTSHEHDLRLRLPVRVTSSVQPLPLPNDCATAGTECHVSGWGITNH

## 靶点信息

研究背景	Kallikreins are a subgroup of serine proteases having diverse physiological functions. Growing evidence suggests that many kallikreins are implicated in carcinogenesis and some have potential as novel cancer and other disease biomarkers. This gene is one of the fifteen kallikrein subfamily members located in a cluster on chromosome 19. Alternate splicing of this gene results in three transcript variants encoding different isoforms.
基因ID	43849

基因名	KLK12
Swiss	Q9UKR0
别名	KLK12;KLK-L5;KLKL5

## 产品验证



Western blot analysis of KLK12 expressed in HeLa using KLK12 Rabbit pAb at 1:1000. Secondary antibody : HRP Goat Anti-Rabbit IgG (H+L) at 1:5000. Lysates/proteins: 30ug per lane. Blocking buffer: 5% non-fat dry milk in TBST. Detection: ECL Enhanced Kit. Exposure time: 120s.

## 实验步骤

访问官网浏览详情: [www.ablybio.cn](http://www.ablybio.cn)