

GLIPR1 Rabbit pAb

货号: **AYP17667**

产品信息

反应	Rat
宿主	Rabbit
克隆性	Polyclonal
预测反应	
应用	WB
推荐浓度	WB: 1:500 - 1:2000
理论分子量	26kDa/30kDa
实测分子量	28kDa
形式	Liquid
保存条件	Store at -20°C. Avoid freeze / thaw cycles. Buffer: PBS with 0.01% thiomersal, 50% glycerol, pH7.3.
偶联物	Unconjugated
阳性对照	Rat lung
细胞定位	Membrane, Single-pass membrane protein
纯化	Affinity purification

抗原信息

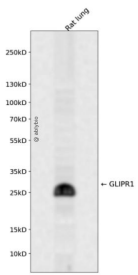
抗原信息	Recombinant fusion protein containing a sequence corresponding to amino acids 22-140 of human GLIPR 1 (NP_006842.2).
序列	ANILPDIENEDFIKDCVRIHNKFRSEVKPTASDMLYMTWDPALAQIAKAWASNCQFSHNTRLKPPHKLHPNFTSLGENIWT GSVPIFSVSSAITNWWYDEIQDYDFKTRICKKVCGHYTQ

靶点信息

研究背景	This gene encodes a protein with similarity to both the pathogenesis-related protein (PR) superfamily and the cysteine-rich secretory protein (CRISP) family. Increased expression of this gene is associated with myelomocytic differentiation in macrophage and decreased expression of this gene through gene methylation is associated with prostate cancer. The protein has proapoptotic activities in prostate and bladder cancer cells. This gene is a member of a cluster on chromosome 12 containing two other similar genes. Alternatively spliced variants which encode different protein isoforms have been described; however, not all variants have been fully characterized.
------	---

基因ID	11010
基因名	GLIPR1
Swiss	P48060
别名	GLIPR1;CRISP7;GLIPR;RTVP1

产品验证



Western blot analysis of GLIPR1 expressed in Rat lung using GLIPR1 Rabbit pAb at 1:1000. Secondary anti body: HRP Goat Anti-Rabbit IgG (H+L) at 1:5000. Lysates/proteins: 30ug per lane. Blocking buffer: 5% no n-fat dry milk in TBST. Detection: ECL Enhanced Kit. Exposure time: 120s.

实验步骤

访问官网浏览详情: www.ablybio.cn