

# BCLAF1 Rabbit pAb

货号: AYP17663

## 产品信息

|       |  |
|-------|--|
| 反应    | Human,Mouse,Rat  |
| 宿主    | Rabbit   |
| 克隆性   | Polyclonal   |
| 预测反应  |  |
| 应用    | WB   |
| 推荐浓度  | <b>WB:</b> 1:500 - 1:1000  |
| 理论分子量 | 85kDa/100kDa/105kDa/106kDa   |
| 实测分子量 | 150KDa   |
| 形式    | Liquid   |
| 保存条件  | Store at -20°C. Avoid freeze / thaw cycles.<br>Buffer: PBS with 0.01% thiomersal,50% glycerol,pH7.3. |
| 偶联物   | Unconjugated   |
| 阳性对照  | SH-SY5Y  |
| 细胞定位  | Cytoplasm,Nucleus,Nucleus speckle,nucleoplasm  |
| 纯化    | Affinity purification  |

## 抗原信息

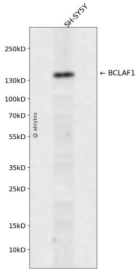
|      |  |
|------|--|
| 抗原信息 | A synthetic peptide corresponding to a sequence within amino acids 600 to the C-terminus of human BCL AF1 (NP_001070909.1).                            |
| 序列   | REEEFKTHHEMKEYSGFAGVSRPRGTFFRIRGRGRARGVFAGTNTGPNNSNTTFQKRPKEEWDPEYTPKSKKYFLHDD<br>RDDGVDYWAKRGRGRGTFQRGRGRFNFKKSQSSPKWTHDKYQGDGIVEDEEETMENNEEKDRRKEEKE |

## 靶点信息

|      |  |
|------|--|
| 研究背景 | This gene encodes a transcriptional repressor that interacts with several members of the BCL2 family of proteins. Overexpression of this protein induces apoptosis, which can be suppressed by co-expression of BCL2 proteins. The protein localizes to dot-like structures throughout the nucleus, and redistributes to a zone near the nuclear envelope in cells undergoing apoptosis. Multiple transcript variants encoding different isoforms have been found for this gene. |
| 基因ID | 9774   |

|       |                      |
|-------|----------------------|
| 基因名   | BCLAF1               |
| Swiss | Q9NYF8               |
| 别名    | BCLAF1;BTF;bK211L9.1 |

## 产品验证



Western blot analysis of BCLAF1 expressed in SH-SY5Y using BCLAF1 Rabbit pAb at 1:1000. Secondary antibody: HRP Goat Anti-Rabbit IgG (H+L) at 1:5000. Lysates/proteins: 30ug per lane. Blocking buffer: 5% non-fat dry milk in TBST. Detection: ECL Enhanced Kit. Exposure time: 120s.

## 实验步骤

访问官网浏览详情: [www.ablybio.cn](http://www.ablybio.cn)