

IKK ϵ Rabbit pAb

货号: **AYP17655**

产品信息

反应	Human,Mouse
宿主	Rabbit
克隆性	Polyclonal
预测反应	
应用	WB IHC IP
推荐浓度	WB: 1:500 - 1:2000 IHC: 1:50 - 1:200 IP: 1:50 - 1:200
理论分子量	70kDa/80kDa
实测分子量	110kDa
形式	Liquid
保存条件	Store at -20°C. Avoid freeze / thaw cycles. Buffer: PBS with 0.02% sodium azide,50% glycerol,pH7.3.
偶联物	Unconjugated
阳性对照	K-562
细胞定位	Cytoplasm,Nucleus,PML body
纯化	Affinity purification

抗原信息

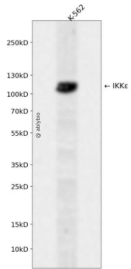
抗原信息	Recombinant fusion protein containing a sequence corresponding to amino acids 460-620 of human IKK ϵ (NP_001180251.1).
序列	VARTSLLYLSSSLGTERFSSVAGTPEIQELKAAAELRSRLRTLAEVLSRCSQNITETQESLSSLNRELVKSRDQVHEDRSIQIQI QCCLDKMNFYKQFKKSRMRPGLGYNEEQIHKLDKVNFSHLAKRLLQVFQEECVQKYQASLVTHGKMRVWHETRNH

靶点信息

研究背景	IKBKE is a noncanonical I-kappa-B (see MIM 164008) kinase (IKK) that is essential for regulating antiviral signaling pathways. IKBKE has also been identified as a breast cancer (MIM 114480) oncogene and is amplified and overexpressed in over 30% of breast carcinomas and breast cancer cell lines.
基因ID	9641

基因名	IKBKE
Swiss	Q14164
别名	IKBKE;IKK-E;IKK-i;IKKE;IKKI

产品验证



Western blot analysis of IKKε expressed in K-562 using IKKε Rabbit pAb at 1:1000. Secondary antibody: HRP Goat Anti-Rabbit IgG (H+L) at 1:5000. Lysates/proteins: 30ug per lane. Blocking buffer: 5% non-fat dry milk in TBST. Detection: ECL Enhanced Kit. Exposure time: 120s.

实验步骤

访问官网浏览详情: www.ablybio.cn