

EPX Rabbit pAb

货号: **AYP17645**

产品信息

反应	Human
宿主	Rabbit
克隆性	Polyclonal
预测反应	
应用	WB
推荐浓度	WB: 1:500 - 1:2000
理论分子量	81kDa
实测分子量	81kDa
形式	Liquid
保存条件	Store at -20°C. Avoid freeze / thaw cycles. Buffer: PBS with 0.01% thiomersal,50% glycerol,pH7.3.
偶联物	Unconjugated
阳性对照	SW620,human serum
细胞定位	Cytoplasmic granule
纯化	Affinity purification

抗原信息

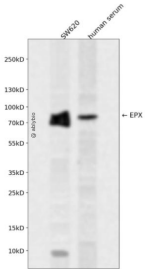
抗原信息	A synthetic peptide corresponding to a sequence within amino acids 400-500 of human EPX (NP_000493.1).
序列	TELRRLNPRWNGDKLYNEARKIMGAMVQIITYRDFLPLVLGKARARRTLGHYRGYCSNVDPRVANVFTLAFRFGHTMLQPFMFRLDSQYRASAPNSHVPLS

靶点信息

研究背景	This gene is a member of the peroxidase gene family and is expressed in eosinophils. The encoded preproprotein is proteolytically processed into covalently attached heavy and light chains to form the mature enzyme, which functions as an oxidant. The enzyme is released at sites of parasitic infection or allergen stimulation to mediate lysis of protozoa or parasitic worms. The gene is found in a gene cluster with other peroxidase genes on chromosome 17. Mutations in this gene result in eosinophil peroxidase deficiency.
基因ID	8288

基因名	EPX
Swiss	P11678
别名	EPX;EPO;EPP;EPX-PEN;EPXD

产品验证



Western blot analysis of EPX expressed in SW620, human serum using EPX Rabbit pAb at 1:1000. Secondary antibody: HRP Goat Anti-Rabbit IgG (H+L) at 1:5000. Lysates/proteins: 30ug per lane. Blocking buffer: 5% non-fat dry milk in TBST. Detection: ECL Enhanced Kit. Exposure time: 120s.

实验步骤

访问官网浏览详情: www.ablybio.cn