

ELL Rabbit pAb

货号: **AYP17644**

产品信息

反应	Human,Mouse
宿主	Rabbit
克隆性	Polyclonal
预测反应	
应用	WB
推荐浓度	WB: 1:500 - 1:2000
理论分子量	68kDa
实测分子量	68kDa
形式	Liquid
保存条件	Store at -20°C. Avoid freeze / thaw cycles. Buffer: PBS with 0.01% thiomersal,50% glycerol,pH7.3.
偶联物	Unconjugated
阳性对照	HeLa,293T,mouse testis,mouse liver
细胞定位	Cajal body,Nucleus,Nucleus speckle
纯化	Affinity purification

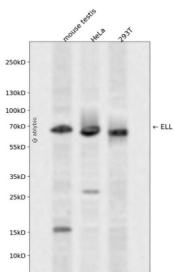
抗原信息

抗原信息	A synthetic peptide corresponding to a sequence within amino acids 350-450 of human ELL (NP_006523.1).
序列	PAVNGKLGVPNGREALLPTGPPASTDTLSSSTHLPPRLEPPRAHDPLADVSNLGHSGRDCEHGEAAAPPTVRLGLPLL TDCAQPSRPHGSPSRKPKK

靶点信息

研究背景	Elongation factor component of the super elongation complex (SEC, a complex required to increase the catalytic rate of RNA polymerase II transcription by suppressing transient pausing by the polymerase at multiple sites along the DNA. Elongation factor component of the little elongation complex (LEC, a complex required to regulate small nuclear RNA (snRNA) gene transcription by RNA polymerase II and III. Specifically required for stimulating the elongation step of RNA polymerase II- and III-dependent snRNA gene transcription. ELL also plays an early role before its assembly into the SEC complex by stabilizing RNA polymerase II recruitment/initiation and entry into the pause site. Required to stabilize the pre-initiation complex and early elongation.
基因ID	8178
基因名	ELL
Swiss	P55199
别名	ELL;C19orf17;ELL1;MEN;PPP1R68

产品验证



Western blot analysis of ELL expressed in mouse testis, HeLa, 293T using ELL Rabbit pAb at 1:1000. Secondary antibody: HRP Goat Anti-Rabbit IgG (H+L) at 1:5000. Lysates/proteins: 30ug per lane. Blocking buffer: 5% non-fat dry milk in TBST. Detection: ECL Enhanced Kit. Exposure time: 120s.

实验步骤

访问官网浏览详情: www.ablybio.cn