

# SUPT6H Rabbit pAb

货号: AYP17635

## 产品信息

反应	Human,Mouse,Rat
宿主	Rabbit
克隆性	Polyclonal
预测反应	
应用	WB IF/ICC IP
推荐浓度	<b>WB:</b> 1:500 - 1:2000 <b>IF/ICC:</b> 1:50 - 1:200 <b>IP:</b> 1:100 - 1:500
理论分子量	61kDa/84kDa/199kDa
实测分子量	260kDa
形式	Liquid
保存条件	Store at -20°C. Avoid freeze / thaw cycles. Buffer: PBS with 0.01% thiomersal,50% glycerol,pH7.3.
偶联物	Unconjugated
阳性对照	U-87MG,Jurkat,HeLa,Mouse brain,Mouse heart,Mouse liver
细胞定位	Nucleus
纯化	Affinity purification

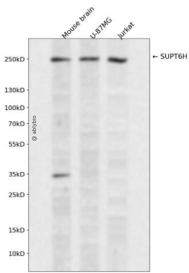
## 抗原信息

抗原信息	Recombinant fusion protein containing a sequence corresponding to amino acids 1500-1726 of human SUPT6H (NP_003161.2).
序列	IFPTVNGLFRWFKDHYQDPVPGITPSSSRTRTPASINATPANINLADLTRAVNALPQNMTSQMFSIAIAAVTGQGQNP NAT PAQWASSQYGYGGSGGSSAYHVFPTPAQQPVATPLMTPSYSTTPSQPITTPQYHQLQASTTPQSAQAQPQSSSRQ RQQPKSNSHAAIDWGMKMAEQWLQEKEAERRKQKQRLTPRSPSPMIESTPMSIAGDATPLLDMDR

## 靶点信息

研究背景	Transcription elongation factor which binds histone H3 and plays a key role in the regulation of transcripti on elongation and mRNA processing. Enhances the transcription elongation by RNA polymerase II (RNAPII and is also required for the efficient activation of transcriptional elongation by the HIV-1 nuclear transcrip tional activator, Tat. Besides chaperoning histones in transcription, acts to transport and splice mRNA by forming a complex with IWS1 and the C-terminal domain (CTD of the RNAPII subunit RPB1 (POLR2A. The SUPT6H:IWS1:CTD complex recruits mRNA export factors (ALYREF/THOC4, EXOSC10 as well as histone m odifying enzymes (such as SETD2, to ensure proper mRNA splicing, efficient mRNA export and elongation -coupled H3K36 methylation, a signature chromatin mark of active transcription. SUPT6H via its associati on with SETD1A, regulates both class-switch recombination and somatic hypermutation through formatio n of H3K4me3 epigenetic marks on activation-induced cytidine deaminase (AICDA target loci. Promotes t he activation of the myogenic gene program by entailing erasure of the repressive H3K27me3 epigenetic mark through stabilization of the chromatin interaction of the H3K27 demethylase KDM6A.
基因ID	6830
基因名	SUPT6H
Swiss	Q7KZ85
别名	SUPT6H;SPT6;SPT6H;emb-5;SPT6 homolog

## 产品验证



Western blot analysis of SUPT6H expressed in Mouse brain,U-87MG,Jurkat using SUPT6H Rabbit pAb at 1:1000. Secondary antibody: HRP Goat Anti-Rabbit IgG (H+L) at 1:5000. Lysates/proteins: 30ug per lane. Blocking buffer: 5% non-fat dry milk in TBST. Detection: ECL Enhanced Kit. Exposure time: 120s.

## 实验步骤

访问官网浏览详情: [www.ablybio.cn](http://www.ablybio.cn)