

SLC26A4 Rabbit pAb

货号: **AYP17633**

产品信息

反应	Mouse
宿主	Rabbit
克隆性	Polyclonal
预测反应	
应用	WB
推荐浓度	WB: 1:500 - 1:2000
理论分子量	39kDa/85kDa
实测分子量	86kDa
形式	Liquid
保存条件	Store at -20°C. Avoid freeze / thaw cycles. Buffer: PBS with 0.01% thiomersal,50% glycerol,pH7.3.
偶联物	Unconjugated
阳性对照	mouse liver
细胞定位	Cell membrane,Membrane,Multi-pass membrane protein
纯化	Affinity purification

抗原信息

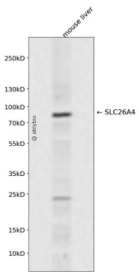
抗原信息	A synthetic peptide corresponding to a sequence within amino acids 250-350 of human SLC26A4 (NP_000432.1).
序列	VLSIIYTLVEIFQNIQDGNLADFTAGLLTIVVCMVAVKELNDRFRHKIPVPIPIEVIVTIIATAISYGANLEKKNYNAGIVKSIPRGFLPP ELPPVSLFSEML

靶点信息

研究背景	Mutations in this gene are associated with Pendred syndrome, the most common form of syndromic deafness, an autosomal-recessive disease. It is highly homologous to the SLC26A3 gene; they have similar genomic structures and this gene is located 3' of the SLC26A3 gene. The encoded protein has homology to sulfate transporters.
基因ID	5172

基因名	SLC26A4
Swiss	O43511
别名	SLC26A4;DFNB4;EVA;PDS;TDH2B;pendrin

产品验证



Western blot analysis of SLC26A4 expressed in mouse liver using SLC26A4 Rabbit pAb at 1:1000. Secondary antibody: HRP Goat Anti-Rabbit IgG (H+L) at 1:5000. Lysates/proteins: 30ug per lane. Blocking buffer: 5% non-fat dry milk in TBST. Detection: ECL Enhanced Kit. Exposure time: 120s.

实验步骤

访问官网浏览详情: www.ablybio.cn