

PON3 Rabbit pAb

货号: **AYP17628**

产品信息

反应	Human
宿主	Rabbit
克隆性	Polyclonal
预测反应	
应用	WB
推荐浓度	WB: 1:500 - 1:2000
理论分子量	39kDa
实测分子量	39kDa
形式	Liquid
保存条件	Store at -20°C. Avoid freeze / thaw cycles. Buffer: PBS with 0.01% thiomersal,50% glycerol,pH7.3.
偶联物	Unconjugated
阳性对照	Jurkat,HepG2
细胞定位	Secreted,extracellular space
纯化	Affinity purification

抗原信息

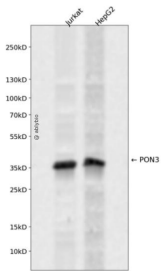
抗原信息	A synthetic peptide corresponding to a sequence within amino acids 250-350 of human PON3 (NP_000931.1).
序列	HDNWDLTQLKVIQLGTLVDNLTVDPATGDILAGCHPNPMKLLNYPEDPPGSEVLRIQNVLSEKPRVSTVYANNGSVLQGTSVASVYHGKILIGTVFHKTL

靶点信息

研究背景	This gene is a member of the paraoxonase family and lies in a cluster on chromosome 7 with the other two family members. The encoded protein is secreted into the bloodstream and associates with high-density lipoprotein (HDL). The protein also rapidly hydrolyzes lactones and can inhibit the oxidation of low-density lipoprotein (LDL), a function that is believed to slow the initiation and progression of atherosclerosis. Alternatively spliced variants which encode different protein isoforms have been described; however, only one has been fully characterized.
------	---

基因ID	5446
基因名	PON3
Swiss	Q15166
别名	PON3

产品验证



Western blot analysis of PON3 expressed in Jurkat, HepG2 using PON3 Rabbit pAb at 1:1000. Secondary antibody: HRP Goat Anti-Rabbit IgG (H+L) at 1:5000. Lysates/proteins: 30ug per lane. Blocking buffer: 5% non-fat dry milk in TBST. Detection: ECL Enhanced Kit. Exposure time: 120s.

实验步骤

访问官网浏览详情: www.ablybio.cn