

RPS17 Rabbit pAb

货号: **AYP17627**

产品信息

反应	Human,Mouse,Rat
宿主	Rabbit
克隆性	Polyclonal
预测反应	
应用	WB IF/ICC
推荐浓度	WB: 1:500 - 1:2000 IF/ICC: 1:50 - 1:200
理论分子量	15kDa
实测分子量	20kDa
形式	Liquid
保存条件	Store at -20°C. Avoid freeze / thaw cycles. Buffer: PBS with 0.01% thiomersal,50% glycerol,pH7.3.
偶联物	Unconjugated
阳性对照	293T,A-549,DU145,BxPC-3,NIH/3T3,mouse brain
细胞定位	cytoplasm,cytosol,cytosolic ribosome,focal adhesion,nucleoplasm
纯化	Affinity purification

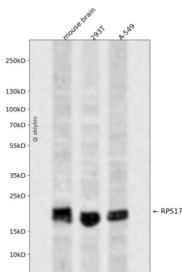
抗原信息

抗原信息	A synthetic peptide corresponding to a sequence within amino acids 1-100 of human RPS17 (NP_001012.1).
序列	MGRVRTKTVKKAARVIIIEKYYTRLGNDFHTNKRVC EEIAIIPSKKLRNKIAGYVTHLMKRIQRG PVRGISIKLQEEERERRDNY VPEVSALDQEIIIEVDP

靶点信息

研究背景	Ribosomes, the organelles that catalyze protein synthesis, consist of a small 40S subunit and a large 60S subunit. Together these subunits are composed of four RNA species and approximately 80 structurally distinct proteins. This gene encodes a ribosomal protein that is a component of the 40S subunit. The protein belongs to the S17E family of ribosomal proteins and is located in the cytoplasm. Mutations in this gene cause Diamond-Blackfan anemia 4. Alternative splicing of this gene results in multiple transcript variants. As is typical for genes encoding ribosomal proteins, there are multiple processed pseudogenes of this gene dispersed through the genome.
基因ID	6218
基因名	RPS17
Swiss	P08708
别名	RPS17;DBA4;RPS17L;RPS17L1;RPS17L2;S17

产品验证



Western blot analysis of RPS17 expressed in mouse brain,293T,A-549 using RPS17 Rabbit pAb at 1:1000. Secondary antibody: HRP Goat Anti-Rabbit IgG (H+L) at 1:5000. Lysates/proteins: 30ug per lane. Blocking buffer: 5% non-fat dry milk in TBST. Detection: ECL Enhanced Kit. Exposure time: 120s.

实验步骤

访问官网浏览详情: www.ablybio.cn