

PRSS8 Rabbit pAb

货号: **AYP17623**

产品信息

反应	Human,Mouse,Rat
宿主	Rabbit
克隆性	Polyclonal
预测反应	
应用	WB IHC IF/ICC
推荐浓度	WB: 1:500 - 1:2000 IHC: 1:100 - 1:200 IF/ICC: 1:50 - 1:200
理论分子量	30kDa/36kDa
实测分子量	36kDa
形式	Liquid
保存条件	Store at -20°C. Avoid freeze / thaw cycles. Buffer: PBS with 0.01% thiomersal,50% glycerol,pH7.3.
偶联物	Unconjugated
阳性对照	Mouse kidney
细胞定位	Cell membrane,Secreted,Single-pass membrane protein,extracellular space,extracellular space
纯化	Affinity purification

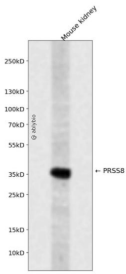
抗原信息

抗原信息	A synthetic peptide corresponding to a sequence within amino acids 200 to the C-terminus of human PRSS8 (NP_002764.1).
序列	TCNCLYNIDAKPEEPHFVQEDMVCAGYVEGGKDACQGDSSGGLSCLPVEGLWYLTGIVSWGDCGARNRPGVYTLASSYASWIQSKVTELQPRVVPQTQESQPDSNLCGSHLAFSSAPAQGLLRPILFLPLGLALGLLSPWLSEH

靶点信息

研究背景	This gene encodes a member of the peptidase S1 or chymotrypsin family of serine proteases. The encoded preproprotein is proteolytically processed to generate light and heavy chains that associate via a disulfide bond to form the heterodimeric enzyme. This enzyme is highly expressed in prostate epithelia and is one of several proteolytic enzymes found in seminal fluid. This protease exhibits trypsin-like substrate specificity, cleaving protein substrates at the carboxyl terminus of lysine or arginine residues. The encoded protease partially mediates proteolytic activation of the epithelial sodium channel, a regulator of sodium balance, and may also play a role in epithelial barrier formation.
基因ID	5652
基因名	PRSS8
Swiss	Q16651
别名	PRSS8;CAP1;PROSTASIN;prostasin

产品验证



Western blot analysis of PRSS8 expressed in Mouse kidney using PRSS8 Rabbit pAb at 1:1000. Secondary antibody: HRP Goat Anti-Rabbit IgG (H+L) at 1:5000. Lysates/proteins: 30ug per lane. Blocking buffer: 5% non-fat dry milk in TBST. Detection: ECL Enhanced Kit. Exposure time: 120s.

实验步骤

访问官网浏览详情: www.ablybio.cn