

# KAL1 Rabbit pAb

货号: **AYP17621**

## 产品信息

|       |                                                                                                      |
|-------|------------------------------------------------------------------------------------------------------|
| 反应    | Human,Mouse,Rat                                                                                      |
| 宿主    | Rabbit                                                                                               |
| 克隆性   | Polyclonal                                                                                           |
| 预测反应  |                                                                                                      |
| 应用    | WB IF/ICC                                                                                            |
| 推荐浓度  | <b>WB:</b> 1:500 - 1:2000<br><b>IF/ICC:</b> 1:50 - 1:200                                             |
| 理论分子量 | 76kDa                                                                                                |
| 实测分子量 | 76kDa                                                                                                |
| 形式    | Liquid                                                                                               |
| 保存条件  | Store at -20°C. Avoid freeze / thaw cycles.<br>Buffer: PBS with 0.01% thiomersal,50% glycerol,pH7.3. |
| 偶联物   | Unconjugated                                                                                         |
| 阳性对照  | SH-SY5Y,Mouse lung                                                                                   |
| 细胞定位  | Cell membrane,Peripheral membrane protein,Secreted                                                   |
| 纯化    | Affinity purification                                                                                |

## 抗原信息

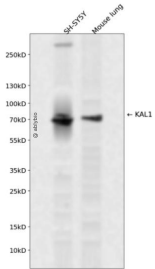
|      |                                                                                                           |
|------|-----------------------------------------------------------------------------------------------------------|
| 抗原信息 | A synthetic peptide corresponding to a sequence within amino acids 200-300 of human KAL1 (NP_000207.2).   |
| 序列   | LEVKWSSKFNISIEPVIYVVQRRWNYGIHPSEDDATHWQTVAQTTDERVQLTDIRPSRWYQFRVAAVNVHGTRGFTAPSK<br>HFRSSKDPSAPPAPANLRLAN |

## 靶点信息

|      |                                                                                                                                                                                                                                                                                   |
|------|-----------------------------------------------------------------------------------------------------------------------------------------------------------------------------------------------------------------------------------------------------------------------------------|
| 研究背景 | Mutations in this gene cause the X-linked Kallmann syndrome. The encoded protein is similar in sequence to proteins known to function in neural cell adhesion and axonal migration. In addition, this cell surface protein is N-glycosylated and may have anti-protease activity. |
| 基因ID | 3730                                                                                                                                                                                                                                                                              |

|       |                                                           |
|-------|-----------------------------------------------------------|
| 基因名   | ANOS1                                                     |
| Swiss | P23352                                                    |
| 别名    | ANOS1;ADMLX;HH1;HHA;KAL;KAL1;KALIG-1;KMS;WFDC19;anosmin-1 |

## 产品验证



Western blot analysis of KAL1 expressed in SH-SY5Y, Mouse lung using KAL1 Rabbit pAb at 1:1000. Secondary antibody: HRP Goat Anti-Rabbit IgG (H+L) at 1:5000. Lysates/proteins: 30ug per lane. Blocking buffer: 5% non-fat dry milk in TBST. Detection: ECL Enhanced Kit. Exposure time: 120s.

## 实验步骤

访问官网浏览详情: [www.ablybio.cn](http://www.ablybio.cn)