

OCM2 Rabbit pAb

货号: **AYP17619**

产品信息

反应	Rat
宿主	Rabbit
克隆性	Polyclonal
预测反应	
应用	WB
推荐浓度	WB: 1:500 - 1:2000
理论分子量	12kDa
实测分子量	12kDa
形式	Liquid
保存条件	Store at -20°C. Avoid freeze / thaw cycles. Buffer: PBS with 0.01% thiomersal,50% glycerol,pH7.3.
偶联物	Unconjugated
阳性对照	Rat kidney
细胞定位	cytoplasm,nucleus
纯化	Affinity purification

抗原信息

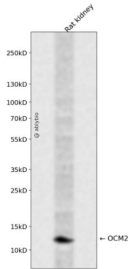
抗原信息	Recombinant fusion protein containing a sequence corresponding to amino acids 1-109 of human OCM2 (NP_006179.2).
序列	MSITDVLSADDIAAALQECQDPDTPFEPQKFFQTSGLSKMSASQVKDVFRFIDNDQSGYLDEEELKFFLQKFESGARELTES ETKSLMAAADNDGDGKIGAEEFQEMVHS

靶点信息

研究背景	This gene is similar to the oncomodulin gene, a high-affinity calcium ion-binding protein that belongs to the superfamily of calmodulin proteins, also known as the EF-hand proteins.
基因ID	4951
基因名	OCM2

Swiss	POCE71
别名	OCM2;OCM

产品验证



Western blot analysis of OCM2 expressed in Rat kidney using OCM2 Rabbit pAb at 1:1000. Secondary anti body: HRP Goat Anti-Rabbit IgG (H+L) at 1:5000. Lysates/proteins: 30ug per lane. Blocking buffer: 5% no n-fat dry milk in TBST. Detection: ECL Enhanced Kit. Exposure time: 120s.

实验步骤

访问官网浏览详情: www.ablybio.cn