

NIT1 Rabbit pAb

货号: **AYP17618**

产品信息

反应	Rat
宿主	Rabbit
克隆性	Polyclonal
预测反应	
应用	WB
推荐浓度	WB: 1:500 - 1:2000
理论分子量	26kDa/31kDa/34kDa/35kDa/40kDa
实测分子量	34kDa
形式	Liquid
保存条件	Store at -20°C. Avoid freeze / thaw cycles. Buffer: PBS with 0.01% thiomersal, 50% glycerol, pH7.3.
偶联物	Unconjugated
阳性对照	Rat liver
细胞定位	Cytoplasm, Mitochondrion
纯化	Affinity purification

抗原信息

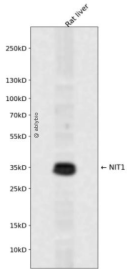
抗原信息	Recombinant fusion protein containing a sequence corresponding to amino acids 1-150 of human NIT1 (NP_001172021.1).
序列	MLGFITRPPHRFLSLLCPGLRIPQSVLCAQPRPRAMAISSSSCELPLVAVCQVTSTPDKQQNFKTCAELVREARLGACLAF LPEAFDFIARDPAETLHLSEPLGGKLLSEYTLARECGLWLSLGGFHERGQDWEQTQKIYNCHVLLN

靶点信息

研究背景	This gene encodes a member of the nitrilase protein family with homology to bacterial and plant nitrilase s, enzymes that cleave nitriles and organic amides to the corresponding carboxylic acids plus ammonia. Multiple transcript variants encoding different isoforms have been found for this gene.
基因ID	4817

基因名	NIT1
Swiss	Q86X76
别名	NIT1

产品验证



Western blot analysis of NIT1 expressed in Rat liver using NIT1 Rabbit pAb at 1:1000. Secondary antibody: HRP Goat Anti-Rabbit IgG (H+L) at 1:5000. Lysates/proteins: 30ug per lane. Blocking buffer: 5% non-fat dry milk in TBST. Detection: ECL Enhanced Kit. Exposure time: 120s.

实验步骤

访问官网浏览详情: www.ablybio.cn