

# KIF2A Rabbit pAb

货号: **AYP17607**

## 产品信息

反应	Human,Mouse,Rat
宿主	Rabbit
克隆性	Polyclonal
预测反应	
应用	WB
推荐浓度	<b>WB:</b> 1:500 - 1:1000
理论分子量	75kDa/76kDa/77kDa/79kDa/84kDa
实测分子量	80kDa
形式	Liquid
保存条件	Store at -20°C. Avoid freeze / thaw cycles. Buffer: PBS with 0.01% thiomersal,50% glycerol,pH7.3.
偶联物	Unconjugated
阳性对照	293T,Jurkat,Mouse lung,Rat brain
细胞定位	Cytoplasm,centrosome,cytoskeleton,microtubule organizing center,spindle,spindle pole
纯化	Affinity purification

## 抗原信息

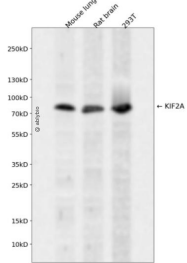
抗原信息	Recombinant fusion protein containing a sequence corresponding to amino acids 30-220 of human KIF2A (NP_004511.2).
序列	TSLNEDNESVTVEWIENGDTKGKEIDLESIFSLNPDLPDEEIEPSPETPPPPASSAKVKNKIVKNRRRTVASIKNDPPSRDNRV VGSARARPSQFPEQSSSAQNGSVSDISPVQAAKKEFGPPSRRKSNVCVKEVEKLQEKREKRRLLQQQLREKRAQDVDAT NPNYEIMCMIRDFRGLDYRPLTTADPID

## 靶点信息

研究背景	The protein encoded by this gene is a plus end-directed motor required for normal mitotic progression. The encoded protein is required for normal spindle activity during mitosis and is necessary for normal brain development. Several transcript variants encoding different isoforms have been found for this gene.
基因ID	3796

基因名	KIF2A
Swiss	O00139
别名	KIF2A;CDCBM3;HK2;KIF2

## 产品验证



Western blot analysis of KIF2A expressed in Mouse lung,Rat brain,293T using KIF2A Rabbit pAb at 1:1000. Secondary antibody: HRP Goat Anti-Rabbit IgG (H+L) at 1:5000. Lysates/proteins: 30ug per lane. Blocking buffer: 5% non-fat dry milk in TBST. Detection: ECL Enhanced Kit. Exposure time: 120s.

## 实验步骤

访问官网浏览详情: [www.ablybio.cn](http://www.ablybio.cn)