

IMPG1 Rabbit pAb

货号: AYP17604

产品信息

反应	Rat
宿主	Rabbit
克隆性	Polyclonal
预测反应	
应用	WB IHC
推荐浓度	WB: 1:500 - 1:2000 IHC: 1:100 - 1:200
理论分子量	17kDa/89kDa
实测分子量	80kDa
形式	Liquid
保存条件	Store at -20°C. Avoid freeze / thaw cycles. Buffer: PBS with 0.01% thiomersal, 50% glycerol, pH 7.3.
偶联物	Unconjugated
阳性对照	Rat eye
细胞定位	Secreted
纯化	Affinity purification

抗原信息

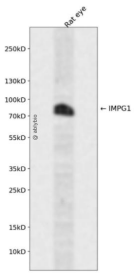
抗原信息	Recombinant fusion protein containing a sequence corresponding to amino acids 21-300 of human IMPG1 (NP_001554.2).
序列	TKDISINIYHSETKDIDNPPRNETTESTEKMYKMSTMRRIFDLAKHRTKRSAFFPTGVKVCPEESMKQILDLSLQAYYRLRVC QEAVWEAYRIFLDRIPDTGEYQDWVSICQQETFCLFDIGKNFSNSQEHLDLLQRIKQRSFPDRKDEISAETLGEGETIVI STDVANVSLGPFPLTPDDTLLNEILDNTLNDTKMPTTERETEFVLEEQRVELSVSLVNQKFAELADSQSPYYQELAGKS QLQMQUIFKKLPGFKKIHVVGFRPKKEKDGSSST

靶点信息

研究背景	This gene encodes a protein that is a major component of the retinal interphotoreceptor matrix. The encoded protein is a proteoglycan that is thought to play a role in maintaining viability of photoreceptor cells and in adhesion of the neural retina to the retinal pigment epithelium. Alternate splicing results in multiple transcript variants.
------	--

基因ID	3617
基因名	IMPG1
Swiss	Q17R60
别名	IMPG1;GP147;IPM150;SPACR;VMD4

产品验证



Western blot analysis of IMPG1 expressed in Rat eye using IMPG1 Rabbit pAb at 1:1000. Secondary antibody: HRP Goat Anti-Rabbit IgG (H+L) at 1:5000. Lysates/proteins: 30ug per lane. Blocking buffer: 5% non-fat dry milk in TBST. Detection: ECL Enhanced Kit. Exposure time: 120s.

实验步骤

访问官网浏览详情: www.ablybio.cn