

# GPD2 Rabbit pAb

货号: **AYP17598**

## 产品信息

反应	Human,Mouse,Rat
宿主	Rabbit
克隆性	Polyclonal
预测反应	
应用	WB IHC
推荐浓度	<b>WB:</b> 1:500 - 1:2000 <b>IHC:</b> 1:50 - 1:200
理论分子量	67kDa/80kDa
实测分子量	81kDa
形式	Liquid
保存条件	Store at -20°C. Avoid freeze / thaw cycles. Buffer: PBS with 0.02% sodium azide,50% glycerol,pH7.3.
偶联物	Unconjugated
阳性对照	THP-1,Mouse skeletal muscle
细胞定位	Mitochondrion
纯化	Affinity purification

## 抗原信息

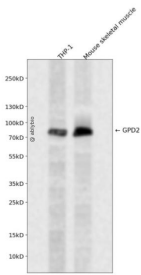
抗原信息	Recombinant fusion protein containing a sequence corresponding to amino acids 25-325 of human GPD2 (NP_000399.3).
序列	SQFAHYRRKQMNLAYVKAADCISEPVNREPPSREAQLLTLQNTSEFDILVIGGGATGSGCALDAVTRGLKTALVERDDFSS GTSSRSTKLIHGCVRYLQKAIMKLDIEQYRMVKEALHERANLLEIAPHLSAPLPIMLPVYKWWQLPYYWVGKLYDLVAGSN CLKSSYVLSKSRALHFPMQLQDKLVGAIVYYDQGHNDARMNLAIALTAARYGAATANYMEVVSLKKTDPQTGKVRVSG ARCKDVLTGQEFDVRAKCVINATGPFTDSVRKMDDKDAAICQPSAGVHIVMPGYSP

## 靶点信息

研究背景	The protein encoded by this gene localizes to the inner mitochondrial membrane and catalyzes the conversion of glycerol-3-phosphate to dihydroxyacetone phosphate, using FAD as a cofactor. Along with GDP1, the encoded protein constitutes the glycerol phosphate shuttle, which reoxidizes NADH formed during glycolysis. Two transcript variants encoding the same protein have been found for this gene.
------	---

基因ID	2820
基因名	GPD2
Swiss	P43304
别名	GPD2;GDH2;GPDM;mGPDH

## 产品验证



Western blot analysis of GPD2 expressed in THP-1, Mouse skeletal muscle using GPD2 Rabbit pAb at 1:1000. Secondary antibody: HRP Goat Anti-Rabbit IgG (H+L) at 1:5000. Lysates/proteins: 30ug per lane. Blocking buffer: 5% non-fat dry milk in TBST. Detection: ECL Enhanced Kit. Exposure time: 120s.

## 实验步骤

访问官网浏览详情: [www.ablybio.cn](http://www.ablybio.cn)