

# FKBP1B Rabbit pAb

货号: **AYP17595**

## 产品信息

反应	Human,Mouse,Rat
宿主	Rabbit
克隆性	Polyclonal
预测反应	
应用	WB IHC IF/ICC
推荐浓度	<b>WB:</b> 1:500 - 1:2000 <b>IHC:</b> 1:50 - 1:100 <b>IF/ICC:</b> 1:50 - 1:100
理论分子量	8kDa/11kDa
实测分子量	13kDa
形式	Liquid
保存条件	Store at -20°C. Avoid freeze / thaw cycles. Buffer: PBS with 0.01% thiomersal,50% glycerol,pH7.3.
偶联物	Unconjugated
阳性对照	22Rv1,Mouse brain,Rat brain
细胞定位	Cytoplasm,Sarcoplasmic reticulum
纯化	Affinity purification

## 抗原信息

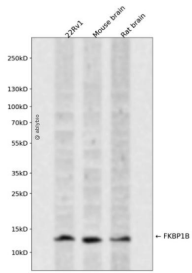
抗原信息	A synthetic peptide corresponding to a sequence within amino acids 1-80 of human FKBP1B (NP_473374.1).
序列	MGVEIETISPGDGRTPFKKGQTCVVHYTGMLQNGKKFDSSRDRNKPFKFRIGKQEVIKGFEEGAAQLGPLSPLPICPHPC

## 靶点信息

研究背景	The protein encoded by this gene is a member of the immunophilin protein family, which play a role in immunoregulation and basic cellular processes involving protein folding and trafficking. This encoded protein is a cis-trans prolyl isomerase that binds the immunosuppressants FK506 and rapamycin. It is highly similar to the FK506-binding protein 1A. Its physiological role is thought to be in excitation-contraction coupling in cardiac muscle. There are two alternatively spliced transcript variants of this gene encoding different isoforms.
------	--

基因ID	2281
基因名	FKBP1B
Swiss	P68106
别名	FKBP1B;FKBP12.6;FKBP1L;OTK4;PKBP1L;PPIase

## 产品验证



Western blot analysis of FKBP1B expressed in 22Rv1, Mouse brain, Rat brain using FKBP1B Rabbit pAb at 1:1000. Secondary antibody: HRP Goat Anti-Rabbit IgG (H+L) at 1:5000. Lysates/proteins: 30ug per lane. Blocking buffer: 5% non-fat dry milk in TBST. Detection: ECL Enhanced Kit. Exposure time: 120s.

## 实验步骤

访问官网浏览详情: [www.ablybio.cn](http://www.ablybio.cn)