

# EMX1 Rabbit pAb

货号: **AYP17593**

## 产品信息

反应	Rat
宿主	Rabbit
克隆性	Polyclonal
预测反应	
应用	WB
推荐浓度	<b>WB:</b> 1:500 - 1:2000
理论分子量	13kDa/28kDa
实测分子量	35kDa
形式	Liquid
保存条件	Store at -20°C. Avoid freeze / thaw cycles. Buffer: PBS with 0.01% thiomersal, 50% glycerol, pH7.3.
偶联物	Unconjugated
阳性对照	Rat liver
细胞定位	Cytoplasm, Nucleus
纯化	Affinity purification

## 抗原信息

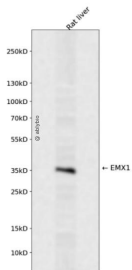
抗原信息	Recombinant fusion protein containing a sequence corresponding to amino acids 70-190 of human EMX1 (NP_004088.2).
序列	AAAASEEPLRPTALNYPHPSAAEAAAFVSGFPAAAAAGAGRSLYGGPELVFPEAMNHPALTVHPAHLGASPLQPPHSFFGA QHRDPLHFYPWVLRNRFFGHRFQASDVPQDGLLLHGPFAR

## 靶点信息

研究背景	Transcription factor, which in cooperation with EMX2, acts to generate the boundary between the roof and archipallium in the developing brain. May function in combinations with OTX1/2 to specify cell fates in the developing central nervous system.
基因ID	2016

基因名	EMX1
Swiss	Q04741
别名	EMX1

## 产品验证



Western blot analysis of EMX1 expressed in Rat liver using EMX1 Rabbit pAb at 1:1000. Secondary antibody: HRP Goat Anti-Rabbit IgG (H+L) at 1:5000. Lysates/proteins: 30ug per lane. Blocking buffer: 5% non-fat dry milk in TBST. Detection: ECL Enhanced Kit. Exposure time: 120s.

## 实验步骤

访问官网浏览详情: [www.ablybio.cn](http://www.ablybio.cn)