

SDHD Rabbit pAb

货号: **AYP17583**

产品信息

反应	Human,Mouse,Rat
宿主	Rabbit
克隆性	Polyclonal
预测反应	
应用	WB
推荐浓度	WB: 1:500 - 1:2000
理论分子量	9kDa/12kDa/15kDa/17kDa
实测分子量	17kDa
形式	Liquid
保存条件	Store at -20°C. Avoid freeze / thaw cycles. Buffer: PBS with 0.01% thiomersal,50% glycerol,pH7.3.
偶联物	Unconjugated
阳性对照	mouse brain,mouse heart,mouse kidney
细胞定位	Mitochondrion inner membrane,Multi-pass membrane protein
纯化	Affinity purification

抗原信息

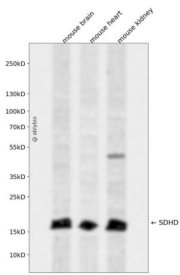
抗原信息	A synthetic peptide corresponding to a sequence within amino acids 50-150 of human SDHD (NP_002993.1).
序列	HLSPSHHSGSKAASLHWTSERVSVLLGLLPAAYLNPCSAMDYSLAAALTLHGHWGLGQVVTDYVHGDALQKAAKAGL LALSALTFAGLCYFNYHVDVGIC

靶点信息

研究背景	This gene encodes a member of complex II of the respiratory chain, which is responsible for the oxidation of succinate. The encoded protein is one of two integral membrane proteins anchoring the complex to the matrix side of the mitochondrial inner membrane. Mutations in this gene are associated with the formation of tumors, including hereditary paraganglioma. Transmission of disease occurs almost exclusively through the paternal allele, suggesting that this locus may be maternally imprinted. There are pseudogenes for this gene on chromosomes 1, 2, 3, 7, and 18. Alternative splicing results in multiple transcript variants.
------	--

基因ID	6392
基因名	SDHD
Swiss	O14521
别名	SDHD;CBT1;CII-4;CWS3;PGL;PGL1;QPs3;SDH4;cybS

产品验证



Western blot analysis of SDHD expressed in mouse brain,mouse heart,mouse kidney using SDHD Rabbit pAb at 1:1000. Secondary antibody: HRP Goat Anti-Rabbit IgG (H+L) at 1:5000. Lysates/proteins: 30ug per lane. Blocking buffer: 5% non-fat dry milk in TBST. Detection: ECL Enhanced Kit. Exposure time: 120 S.

实验步骤

访问官网浏览详情: www.ablybio.cn