

EPPIN Rabbit pAb

货号: **AYP17567**

产品信息

反应	Human,Mouse,Rat
宿主	Rabbit
克隆性	Polyclonal
预测反应	
应用	WB
推荐浓度	WB: 1:500 - 1:1000
理论分子量	13kDa/15kDa/20kDa
实测分子量	20KDa
形式	Liquid
保存条件	Store at -20°C. Avoid freeze / thaw cycles. Buffer: PBS with 0.01% thiomersal,50% glycerol,pH7.3.
偶联物	Unconjugated
阳性对照	Mouse testis,Rat testis
细胞定位	Cell surface,Secreted
纯化	Affinity purification

抗原信息

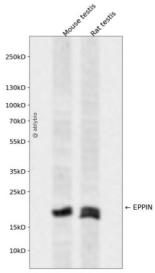
抗原信息	Recombinant fusion protein containing a sequence corresponding to amino acids 22-133 of human EPPIN (NP_065131.1).
序列	PGLTDWLFPRRCPKIREECEVFQERDVCTKDRQCQDNKKCCVFSCGKKCLDLKQDVCEMPKETGPCLAYFLHWWYDKKD NTCSMFVYGGCQGNNNNFQSKANCLNTCKNKRFP

靶点信息

研究背景	This gene encodes an epididymal protease inhibitor, which contains both kunitz-type and WAP-type four-d isulfide core (WFDC) protease inhibitor consensus sequences. Most WFDC genes are localized to chromos ome 20q12-q13 in two clusters: centromeric and telomeric. This gene is a member of the WFDC gene fam ily and belongs to the telomeric cluster. The protein can inhibit human sperm motility and exhibits antimicrobial activity against E. coli, and polymorphisms in this gene are associated with male infertility. Read-t hrough transcription also exists between this gene and the downstream WFDC6 (WAP four-disulfide core domain 6) gene. Two transcript variants encoding different isoforms have been found for this gene.
------	--

基因ID	57119
基因名	
Swiss	O95925
别名	EPPIN;CT71;CT72;SPINLW1;WAP7;WFDC7;dj461P17.2;eppin

产品验证



Western blot analysis of EPPIN expressed in Mouse testis,Rat testis using EPPIN Rabbit pAb at 1:1000. Secondary antibody: HRP Goat Anti-Rabbit IgG (H+L) at 1:5000. Lysates/proteins: 30ug per lane. Blocking buffer: 5% non-fat dry milk in TBST. Detection: ECL Enhanced Kit. Exposure time: 120s.

实验步骤

访问官网浏览详情: www.ablybio.cn