

SCCPDH Rabbit pAb

货号: **AYP17566**

产品信息

反应	Human,Mouse
宿主	Rabbit
克隆性	Polyclonal
预测反应	
应用	WB
推荐浓度	WB: 1:500 - 1:2000
理论分子量	47kDa
实测分子量	45kDa
形式	Liquid
保存条件	Store at -20°C. Avoid freeze / thaw cycles. Buffer: PBS with 0.02% sodium azide,50% glycerol,pH7.3.
偶联物	Unconjugated
阳性对照	THP-1,PC-3,22Rv1,U-251MG,A673,Mouse heart
细胞定位	extracellular region,lipid droplet,mitochondrion,nucleus
纯化	Affinity purification

抗原信息

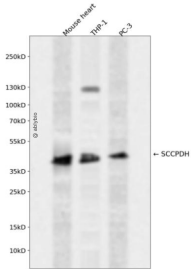
抗原信息	Recombinant fusion protein containing a sequence corresponding to amino acids 1-270 of human SCCPDH (NP_057086.2).
序列	MATEQRPFHLVVFVGASGFTGQFVTEEVAREQVDPERSRLPWAVAGRSREKLQRVLEKAALKLGRPTLSSEVGIIICDIANP ASLDEMAKQATVVLNLCVGPYRFYGEPIKACIENGASCIDISGEPQFLELMQLKYHEKAADKGVYIIGSSGFDSIPADLGVYI TRNKMNGTLTAVESFLTIIHSGPEGLSIHDGTWKSAYGFQDQSNLRKLRNVSNLKPVPLIGPKLRRWPISYCRELKGYSIPF MGSDVSVVRRRTQRYLYENLEES

靶点信息

研究背景	Predicted to enable oxidoreductase activity. Predicted to be involved in glycolipid biosynthetic process. Located in lipid droplet and midbody.
基因ID	51097

基因名	SCCPDH
Swiss	Q8NBX0
别名	SCCPDH;CGI-49;NET11

产品验证



Western blot analysis of SCCPDH expressed in Mouse heart,THP-1,PC-3 using SCCPDH Rabbit pAb at 1:1000. Secondary antibody: HRP Goat Anti-Rabbit IgG (H+L) at 1:5000. Lysates/proteins: 30ug per lane. Blocking buffer: 5% non-fat dry milk in TBST. Detection: ECL Enhanced Kit. Exposure time: 120s.

实验步骤

访问官网浏览详情: www.ablybio.cn