

eIF4A Rabbit pAb

货号: **AYP17561**

产品信息

反应	Human,Mouse,Rat
宿主	Rabbit
克隆性	Polyclonal
预测反应	
应用	WB IF/ICC
推荐浓度	WB: 1:500 - 1:1000 IF/ICC: 1:50 - 1:200
理论分子量	
实测分子量	46KDa
形式	Liquid
保存条件	Store at -20°C. Avoid freeze / thaw cycles. Buffer: PBS with 0.01% thiomersal,50% glycerol,pH7.3.
偶联物	Unconjugated
阳性对照	293T,HeLa,HepG2,MCF7,C2C12,Mouse brain,Rat brain
细胞定位	cytoplasm,cytosol,eukaryotic translation initiation factor 4F complex,extracellular exosome
纯化	Affinity purification

抗原信息

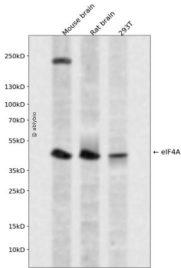
抗原信息	A synthetic peptide corresponding to a sequence within amino acids 1-100 of human eIF4A (NP_001407.1).
序列	MSASQDSRSRDNGPDGMEPEGVIESNWNEIVDSFDDMNLSESLLRGIYAYGFKPSAIQQRAILPCIKGYDVIAQAQSGT GKTATFAISILQQIELDLKA

靶点信息

研究背景	ATP-dependent RNA helicase which is a subunit of the eIF4F complex involved in cap recognition and is required for mRNA binding to ribosome. In the current model of translation initiation, eIF4A unwinds RNA secondary structures in the 5'-UTR of mRNAs which is necessary to allow efficient binding of the small ribosomal subunit, and subsequent scanning for the initiator codon.
基因ID	1973,1974,9775

基因名	EIF4A1,EIF4A2,EIF4A3
Swiss	P60842,Q14240,P38919
别名	

产品验证



Western blot analysis of eIF4A expressed in Mouse brain,Rat brain,293T using eIF4A Rabbit pAb at 1:10 00. Secondary antibody: HRP Goat Anti-Rabbit IgG (H+L) at 1:5000. Lysates/proteins: 30ug per lane. Blocking buffer: 5% non-fat dry milk in TBST. Detection: ECL Enhanced Kit. Exposure time: 120s.

实验步骤

访问官网浏览详情: www.ablybio.cn