

CBX1 Rabbit pAb

货号: **AYP17549**

产品信息

反应	Human
宿主	Rabbit
克隆性	Polyclonal
预测反应	
应用	WB
推荐浓度	WB: 1:500 - 1:1000
理论分子量	21kDa
实测分子量	21kDa
形式	Liquid
保存条件	Store at -20°C. Avoid freeze / thaw cycles. Buffer: PBS with 0.05% proclin300,50% glycerol,pH7.3.
偶联物	Unconjugated
阳性对照	OVCAR3
细胞定位	Nucleus
纯化	Affinity purification

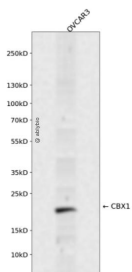
抗原信息

抗原信息	A synthetic peptide corresponding to a sequence within amino acids 1-100 of human HP1 beta/CBX1 (NP_006798.1).
序列	MGKKQNKKKVEEVLEEEEEYVVEKVLDRRVKKGKVEYLLKWKGFSDDEDNTWEPEENLDCPDLIAEFLQSQKTAHETDKS EGGKRKADSDSEDKGEESKP

靶点信息

研究背景	This gene encodes a highly conserved nonhistone protein, which is a member of the heterochromatin protein family. The protein is enriched in the heterochromatin and associated with centromeres. The protein has a single N-terminal chromodomain which can bind to histone proteins via methylated lysine residues, and a C-terminal chromo shadow-domain (CSD) which is responsible for the homodimerization and interaction with a number of chromatin-associated nonhistone proteins. The protein may play an important role in the epigenetic control of chromatin structure and gene expression. Several related pseudogenes are located on chromosomes 1, 3, and X. Multiple alternatively spliced variants, encoding the same protein, have been identified.
基因ID	10951
基因名	CBX1
Swiss	P83916
别名	CBX1;CBX;HP1-BETA;HP1Hs-beta;HP1Hsbeta;M31;MOD1;p25beta

产品验证



Western blot analysis of CBX1 expressed in OVCAR3 using CBX1 Rabbit pAb at 1:1000. Secondary antibody: HRP Goat Anti-Rabbit IgG (H+L) at 1:5000. Lysates/proteins: 30ug per lane. Blocking buffer: 5% non-fat dry milk in TBST. Detection: ECL Enhanced Kit. Exposure time: 120s.

实验步骤

访问官网浏览详情: www.ablybio.cn