

— ABLYBIO, Help Your Research



EDF1 Rabbit pAb

货号: **AYP17547**

产品信息

反应	Human,Mouse,Rat
宿主	Rabbit
克隆性	Polyclonal
预测反应	
应用	WB IHC IF/ICC
推荐浓度	WB: 1:500 - 1:2000 IHC: 1:50 - 1:100 IF/ICC: 1:50 - 1:100
理论分子量	15kDa/16kDa
实测分子量	16kDa
形式	Liquid
保存条件	Store at -20°C. Avoid freeze / thaw cycles. Buffer: PBS with 0.02% sodium azide,50% glycerol,pH7.3.
偶联物	Unconjugated
阳性对照	HepG2,Mouse brain,Mouse liver,Rat brain,NIH/3T3
细胞定位	Cytoplasm,Nucleus
纯化	Affinity purification

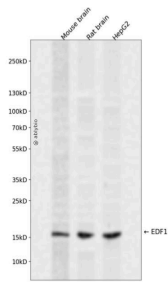
抗原信息

抗原信息	Recombinant fusion protein containing a sequence corresponding to amino acids 1-148 of human EDF1 (NP_003783.1).
------	------------------------------------------------------------------------------------------------------------------

靶点信息

研究背景	This gene encodes a protein that may regulate endothelial cell differentiation, lipid metabolism, and hormone-induced cardiomyocyte hypertrophy. The encoded protein has also been found to act as a transcriptional coactivator by interconnecting the general transcription factor TATA element-binding protein (TBP) and gene-specific activators. Alternate splicing results in multiple transcript variants.
基因ID	8721
基因名	EDF1
Swiss	O60869 (https://www.uniprot.org/uniprotkb/O60869/entry)
别名	EDF1,CFAP280,EDF-1,MBF1,EDF1 Rabbit pAb,Multiprotein-bridging factor 1

产品验证



Western blot analysis of EDF1 expressed in Mouse brain,Rat brain,HepG2 using EDF1 Rabbit pAb at 1:100. Secondary antibody: HRP Goat Anti-Rabbit IgG (H+L) at 1:5000. Lysates/proteins: 30ug per lane. Blocking buffer: 5% non-fat dry milk in TBST. Detection: ECL Enhanced Kit. Exposure time: 120s.

实验步骤

访问官网浏览详情: www.ablybio.cn (<https://www.ablybio.cn/www.ablybio.cn>)