

Ms4a4a Rabbit pAb

货号: **AYP17537**

产品信息

反应	Mouse
宿主	Rabbit
克隆性	Polyclonal
预测反应	
应用	WB
推荐浓度	WB: 1:500 - 1:2000
理论分子量	
实测分子量	27kDa
形式	Liquid
保存条件	Store at -20°C. Avoid freeze / thaw cycles. Buffer: PBS with 0.01% thiomersal, 50% glycerol, pH7.3.
偶联物	Unconjugated
阳性对照	Mouse stomach
细胞定位	
纯化	Affinity purification

抗原信息

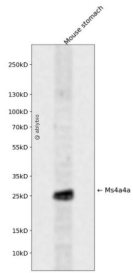
抗原信息	A synthetic peptide corresponding to a sequence within amino acids 150-236 of mouse Ms4a4a (NP_001297260.1).
序列	GSSEGCHMTLSILMGLDIVVVVLSVLEFCIGVLSAFGCRVMCCNPGGVMIIIMPSNPTKAETANPVTLQSGLMPPEHQERNVPENMH

靶点信息

研究背景	Predicted to be located in Golgi apparatus; endoplasmic reticulum; and plasma membrane raft. Orthologous to human MS4A4A (membrane spanning 4-domains A4A).
基因ID	666907
基因名	

Swiss	
别名	EG666907;Ms4a4a;MS4A4A

产品验证



Western blot analysis of Ms4a4a expressed in Mouse stomach using Ms4a4a Rabbit pAb at 1:1000. Secondary antibody: HRP Goat Anti-Rabbit IgG (H+L) at 1:5000. Lysates/proteins: 30ug per lane. Blocking buffer: 5% non-fat dry milk in TBST. Detection: ECL Enhanced Kit. Exposure time: 120s.

实验步骤

访问官网浏览详情: www.ablybio.cn