

# SQLE Rabbit pAb

货号: **AYP17530**

## 产品信息

反应	Human,Mouse,Rat
宿主	Rabbit
克隆性	Polyclonal
预测反应	
应用	WB IHC IF/ICC
推荐浓度	<b>WB:</b> 1:500 - 1:1000 <b>IHC:</b> 1:50 - 1:100 <b>IF/ICC:</b> 1:50 - 1:100
理论分子量	63kDa
实测分子量	50-64KDa
形式	Liquid
保存条件	Store at -20°C. Avoid freeze / thaw cycles. Buffer: PBS with 0.01% thiomersal,50% glycerol,pH7.3.
偶联物	Unconjugated
阳性对照	HepG2
细胞定位	Endoplasmic reticulum membrane, Microsome membrane, Multi-pass membrane protein
纯化	Affinity purification

## 抗原信息

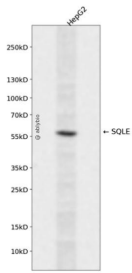
抗原信息	Recombinant fusion protein containing a sequence corresponding to amino acids 143-400 of human SQLE (NP_003120.2).
序列	SRDGRKVTVIERDLKEPDRIVGEFLQPGGYHVLKDLGLGDTVEGLDAQVNVNGYMIHDQESKSEVQIPYPLSENNQVQSGR AFHHGRFIMSLRKAAMAEPNAKFIGVVLQLEEDDVVMGVQYKDKETGDIKELHAPLTVVADGLFSKFRKSLVSNKVSVS SHFVGFMLMKNAPQFKANHAELILANPSPVLIYQISSSETRVLVDIRGEMPRNLREYMVEKIYPQIPDHLKEPFLEATDNSHLRS MPASFLPPSSVKK

## 靶点信息

研究背景	Squalene epoxidase catalyzes the first oxygenation step in sterol biosynthesis and is thought to be one of the rate-limiting enzymes in this pathway.
------	---

基因ID	6713
基因名	SQLE
Swiss	Q14534
别名	SQLE

## 产品验证



Western blot analysis of SQLE expressed in HepG2 using SQLE Rabbit pAb at 1:1000. Secondary antibody: HRP Goat Anti-Rabbit IgG (H+L) at 1:5000. Lysates/proteins: 30ug per lane. Blocking buffer: 5% non-fat dry milk in TBST. Detection: ECL Enhanced Kit. Exposure time: 120s.

## 实验步骤

访问官网浏览详情: [www.ablybio.cn](http://www.ablybio.cn)