

# Purinergic Receptor P2Y6 Rabbit pAb

货号: **AYP17524**

## 产品信息

反应	Human,Mouse
宿主	Rabbit
克隆性	Polyclonal
预测反应	
应用	WB
推荐浓度	<b>WB:</b> 1:500 - 1:1000
理论分子量	36kDa
实测分子量	42kDa
形式	Liquid
保存条件	Store at -20°C. Avoid freeze / thaw cycles. Buffer: PBS with 0.01% thiomersal,50% glycerol,pH7.3.
偶联物	Unconjugated
阳性对照	Mouse lung
细胞定位	Cell membrane,Multi-pass membrane protein
纯化	Affinity purification

## 抗原信息

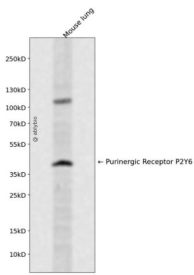
抗原信息	A synthetic peptide corresponding to a sequence within amino acids 200-300 of human Purinergic Receptor P2Y6 (NP_789766.1).
序列	GFLLPFAALLACYLLACRLCRQDGAEPVAQERRGKAARMAVVVAAAFAISFLPFHITKAYLAVRSTPGVPCTVLEAFAAA YKGTRPFASANSVLDPIIL

## 靶点信息

研究背景	The product of this gene belongs to the family of P2 receptors, which is activated by extracellular nucleotides and subdivided into P2X ligand-gated ion channels and P2Y G-protein coupled receptors. This family has several receptor subtypes with different pharmacological selectivity, which overlaps in some cases, for various adenosine and uridine nucleotides. This receptor, which is a G-protein coupled receptor, is responsive to UDP, partially responsive to UTP and ADP, and not responsive to ATP. It is proposed that this receptor mediates inflammatory responses. Alternative splicing results in multiple transcript variants that encode different protein isoforms.
------	---

基因ID	5031
基因名	P2RY6
Swiss	Q15077
别名	P2RY6;P2Y6

## 产品验证



Western blot analysis of Purinergic Receptor P2Y6 expressed in Mouse lung using Purinergic Receptor P2Y6 Rabbit pAb at 1:1000. Secondary antibody: HRP Goat Anti-Rabbit IgG (H+L) at 1:5000. Lysates/proteins: 30ug per lane. Blocking buffer: 5% non-fat dry milk in TBST. Detection: ECL Enhanced Kit. Exposure time: 120s.

## 实验步骤

访问官网浏览详情: [www.ablybio.cn](http://www.ablybio.cn)