

GNAO1 Rabbit pAb

货号: **AYP17516**

产品信息

反应	Human,Mouse,Rat
宿主	Rabbit
克隆性	Polyclonal
预测反应	
应用	WB IF/ICC
推荐浓度	WB: 1:500 - 1:2000 IF/ICC: 1:50 - 1:200
理论分子量	40kDa
实测分子量	39kDa
形式	Liquid
保存条件	Store at -20°C. Avoid freeze / thaw cycles. Buffer: PBS with 0.01% thiomersal,50% glycerol,pH7.3.
偶联物	Unconjugated
阳性对照	Mouse brain,Mouse spinal cord
细胞定位	Cell membrane,Lipid-anchor,Membrane
纯化	Affinity purification

抗原信息

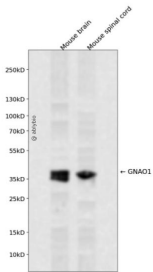
抗原信息	Recombinant fusion protein containing a sequence corresponding to amino acids 60-180 of human GNAO 1 (NP_066268.1).
序列	GFSGEDVKQYKPVVYSNTIQSLAAIVRAMDTLGIEYGDKERKADAKMVCDDVSRMEDTEPFSAELLSAMMRLWGDSGIQ ECFNRSREYQLNDSAKYYLDSLDRIGAADYQPTEQDILRTRV

靶点信息

研究背景	The protein encoded by this gene represents the alpha subunit of the Go heterotrimeric G-protein signal-transducing complex. Defects in this gene are a cause of early-onset epileptic encephalopathy. Two transcript variants encoding different isoforms have been found for this gene.
基因ID	2775

基因名	GNAO1
Swiss	P09471
别名	GNAO1;EIEE17;G-ALPHA-o;GNAO;HLA-DQB1;NEDIM

产品验证



Western blot analysis of GNAO1 expressed in Mouse brain, Mouse spinal cord using GNAO1 Rabbit pAb at 1:1000. Secondary antibody: HRP Goat Anti-Rabbit IgG (H+L) at 1:5000. Lysates/proteins: 30ug per lane. Blocking buffer: 5% non-fat dry milk in TBST. Detection: ECL Enhanced Kit. Exposure time: 120s.

实验步骤

访问官网浏览详情: www.ablybio.cn