

DNASE1 Rabbit pAb

货号: **AYP17502**

产品信息

反应	Human,Mouse,Rat
宿主	Rabbit
克隆性	Polyclonal
预测反应	
应用	WB
推荐浓度	WB: 1:500 - 1:1000
理论分子量	19kDa/31kDa
实测分子量	32KDa
形式	Liquid
保存条件	Store at -20°C. Avoid freeze / thaw cycles. Buffer: PBS with 0.01% thiomersal,50% glycerol,pH7.3.
偶联物	Unconjugated
阳性对照	BxPC-3,SGC-7901,Mouse heart,Rat liver
细胞定位	Nucleus envelope,Secreted
纯化	Affinity purification

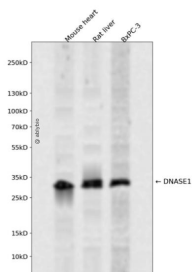
抗原信息

抗原信息	Recombinant fusion protein containing a sequence corresponding to amino acids 22-282 of human DNASE1 (NP_005214.2).
序列	SLKIAAFNIQTFGETKMSNATLVSYIVQILSRVDIALVQEVDRDLSHTAVGKLLDNLNQDAPDTYHYVSEPLGRNSYKERYLFVYRPDQVSAVDSYDDGCEPCGNDTFNREPAIVRFFSRFTEVREFAIVPLHAAPGDVAEIDALYDVYLDVQEKWGLEDVMLMGDFNAGCSYVRPSQWSSIRLWTSPTFQWLIPDSADTTATPTHCAYDRIVVAGMLLRGAVVPDSALPFNFQAAYGLSDQLAQASDHYPVEVMLK

靶点信息

研究背景	This gene encodes a member of the DNase family. This protein is stored in the zymogen granules of the nuclear envelope and functions by cleaving DNA in an endonucleolytic manner. At least six autosomal codominant alleles have been characterized, DNASE1*1 through DNASE1*6, and the sequence of DNASE1*2 represented in this record. Mutations in this gene have been associated with systemic lupus erythematosus (SLE), an autoimmune disease. A recombinant form of this protein is used to treat the one of the symptoms of cystic fibrosis by hydrolyzing the extracellular DNA in sputum and reducing its viscosity. Alternate transcriptional splice variants of this gene have been observed but have not been thoroughly characterized.
基因ID	1773
基因名	DNASE1
Swiss	P24855
别名	DNASE1;DNL1;DRNI

产品验证



Western blot analysis of DNASE1 expressed in Mouse heart, Rat liver, BxPC-3 using DNASE1 Rabbit pAb at 1:1000. Secondary antibody: HRP Goat Anti-Rabbit IgG (H+L) at 1:5000. Lysates/proteins: 30ug per lane. Blocking buffer: 5% non-fat dry milk in TBST. Detection: ECL Enhanced Kit. Exposure time: 120s.

实验步骤

访问官网浏览详情: www.ablybio.cn