

ALDH4A1 Rabbit pAb

货号: **AYP17484**

产品信息

反应	Human,Mouse
宿主	Rabbit
克隆性	Polyclonal
预测反应	
应用	WB IF/ICC
推荐浓度	WB: 1:500 - 1:2000 IF/ICC: 1:50 - 1:200
理论分子量	55kDa/56kDa/61kDa
实测分子量	65kDa
形式	Liquid
保存条件	Store at -20°C. Avoid freeze / thaw cycles. Buffer: PBS with 0.02% sodium azide,50% glycerol,pH7.3.
偶联物	Unconjugated
阳性对照	HepG2,K-562,A-549,BT-474,Mouse skeletal muscle,Mouse intestine,Mouse kidney
细胞定位	Mitochondrion matrix
纯化	Affinity purification

抗原信息

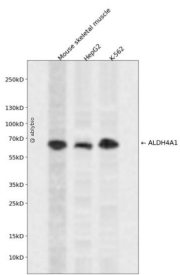
抗原信息	Recombinant fusion protein containing a sequence corresponding to amino acids 354-563 of human ALDH4A1 (NP_003739.2).
序列	LYVPHSLWPQIKGRLLLEEHSRIKVGDP AEDFGTFFSAVIDAKSFARIKKWLEHARSSPSLTILAGGKCDDSVGYFVEPCIVES KDPQEPIMKEEIFGPVLSVYYPDDKYKETLQLVDSTTSYGLTGAVFSQDKD VVQEATKVL RNAAGNFYINDKSTGSIVGQ QPFGGARASGTNDKPGGPHYLRWTSQVIKETHKPLGDWSYAYMQ

靶点信息

研究背景	This protein belongs to the aldehyde dehydrogenase family of proteins. This enzyme is a mitochondrial matrix NAD-dependent dehydrogenase which catalyzes the second step of the proline degradation pathway, converting pyrroline-5-carboxylate to glutamate. Deficiency of this enzyme is associated with type II hyperprolinemia, an autosomal recessive disorder characterized by accumulation of delta-1-pyrroline-5-carboxylate (P5C) and proline. Alternatively spliced transcript variants encoding different isoforms have been identified for this gene.
------	---

基因ID	8659
基因名	ALDH4A1
Swiss	P30038
别名	ALDH4A1;ALDH4;P5CD;P5CDh

产品验证



Western blot analysis of ALDH4A1 expressed in Mouse skeletal muscle, HepG2, K-562 using ALDH4A1 Rabbit pAb at 1:1000. Secondary antibody: HRP Goat Anti-Rabbit IgG (H+L) at 1:5000. Lysates/proteins: 30ug per lane. Blocking buffer: 5% non-fat dry milk in TBST. Detection: ECL Enhanced Kit. Exposure time: 120s.

实验步骤

访问官网浏览详情: www.ablybio.cn