

Cathepsin E (CTSE) Rabbit pAb

货号: **AYP17472**

产品信息

| | |
|-------|--|
| 反应 | Human,Mouse,Rat |
| 宿主 | Rabbit |
| 克隆性 | Polyclonal |
| 预测反应 | |
| 应用 | WB IHC |
| 推荐浓度 | WB: 1:500 - 1:1000 IHC: 1:50 - 1:200 |
| 理论分子量 | 39kDa/42kDa/43kDa |
| 实测分子量 | 45KDa |
| 形式 | Liquid |
| 保存条件 | Store at -20°C. Avoid freeze / thaw cycles. Buffer: PBS with 0.05% proclin300,50% glycerol,pH7.3. |
| 偶联物 | Unconjugated |
| 阳性对照 | Mouse spleen,Mouse small intestine,Rat thymus |
| 细胞定位 | Endosome |
| 纯化 | Affinity purification |

抗原信息

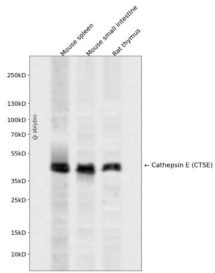
| | |
|------|---|
| 抗原信息 | Recombinant fusion protein containing a sequence corresponding to amino acids 132-244 of human Cathepsin E (CTSE) (P14091). |
| 序列 | GQSFSIQYGTGSLSGIIGADQVSVEGLTVVGQQFGESVTEPGQTFVDAEFDGILGLGYPSLAVGGVTPVFDNMMAQNLV DLPMFSVYMSSNPEGGAGSELIFGGYDHSFSGS |

靶点信息

| | |
|------|--|
| 研究背景 | This gene encodes a member of the A1 family of peptidases. Alternative splicing of this gene results in multiple transcript variants. At least one of these variants encodes a preproprotein that is proteolytically processed to generate the mature enzyme. This enzyme, an aspartic endopeptidase, may be involved in antigen processing and the maturation of secretory proteins. Elevated expression of this gene has been observed in neurodegeneration. |
|------|--|

| | |
|-------|-----------|
| 基因ID | 1510 |
| 基因名 | CTSE |
| Swiss | P14091 |
| 别名 | CTSE;CATE |

产品验证



Western blot analysis of Cathepsin E (CTSE) expressed in Mouse spleen, Mouse small intestine, Rat thymus using Cathepsin E (CTSE) Rabbit pAb at 1:1000. Secondary antibody: HRP Goat Anti-Rabbit IgG (H+L) at 1:5000. Lysates/proteins: 30ug per lane. Blocking buffer: 5% non-fat dry milk in TBST. Detection: ECL Enhanced Kit. Exposure time: 120s.

实验步骤

访问官网浏览详情: www.ablybio.cn