

CLEC4A Rabbit pAb

货号: **AYP17466**

产品信息

反应	Human,Mouse
宿主	Rabbit
克隆性	Polyclonal
预测反应	
应用	WB
推荐浓度	WB: 1:500 - 1:2000
理论分子量	19kDa/23kDa/27kDa
实测分子量	25kDa
形式	Liquid
保存条件	Store at -20°C. Avoid freeze / thaw cycles. Buffer: PBS with 0.01% thiomersal,50% glycerol,pH7.3.
偶联物	Unconjugated
阳性对照	A-549,HeLa,HT-29,Mouse spleen,Mouse lung
细胞定位	Membrane,Single-pass type II membrane protein
纯化	Affinity purification

抗原信息

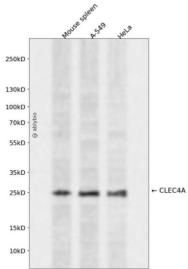
抗原信息	A synthetic peptide corresponding to a sequence within amino acids 1-100 of human CLEC4A (Q9UMR7).
序列	MTSEITYAEVRFKNEFKSSGINTASSAASKERTAPHKSN TGFPKLLCASLLIFFLLLAI SFFIAFVIFVQKYSQ LLEKTKKELVH TTLECVKKNMPVEE

靶点信息

研究背景	This gene encodes a member of the C-type lectin/C-type lectin-like domain (CTL/CTLD) superfamily. Members of this family share a common protein fold and have diverse functions, such as cell adhesion, cell-cell signalling, glycoprotein turnover, and roles in inflammation and immune response. The encoded type 2 transmembrane protein may play a role in inflammatory and immune response. Multiple transcript variants encoding distinct isoforms have been identified for this gene. This gene is closely linked to other CTL/C TLD superfamily members on chromosome 12p13 in the natural killer gene complex region.
基因ID	50856

基因名	CLEC4A
Swiss	Q9UMR7
别名	CLEC4A;CD367;CLECSF6;DCIR;DDB27;HDCGC13P;LLIR

产品验证



Western blot analysis of CLEC4A expressed in Mouse spleen,A-549,HeLa using CLEC4A Rabbit pAb at 1:1000. Secondary antibody: HRP Goat Anti-Rabbit IgG (H+L) at 1:5000. Lysates/proteins: 30ug per lane. Blocking buffer: 5% non-fat dry milk in TBST. Detection: ECL Enhanced Kit. Exposure time: 120s.

实验步骤

访问官网浏览详情: www.ablybio.cn